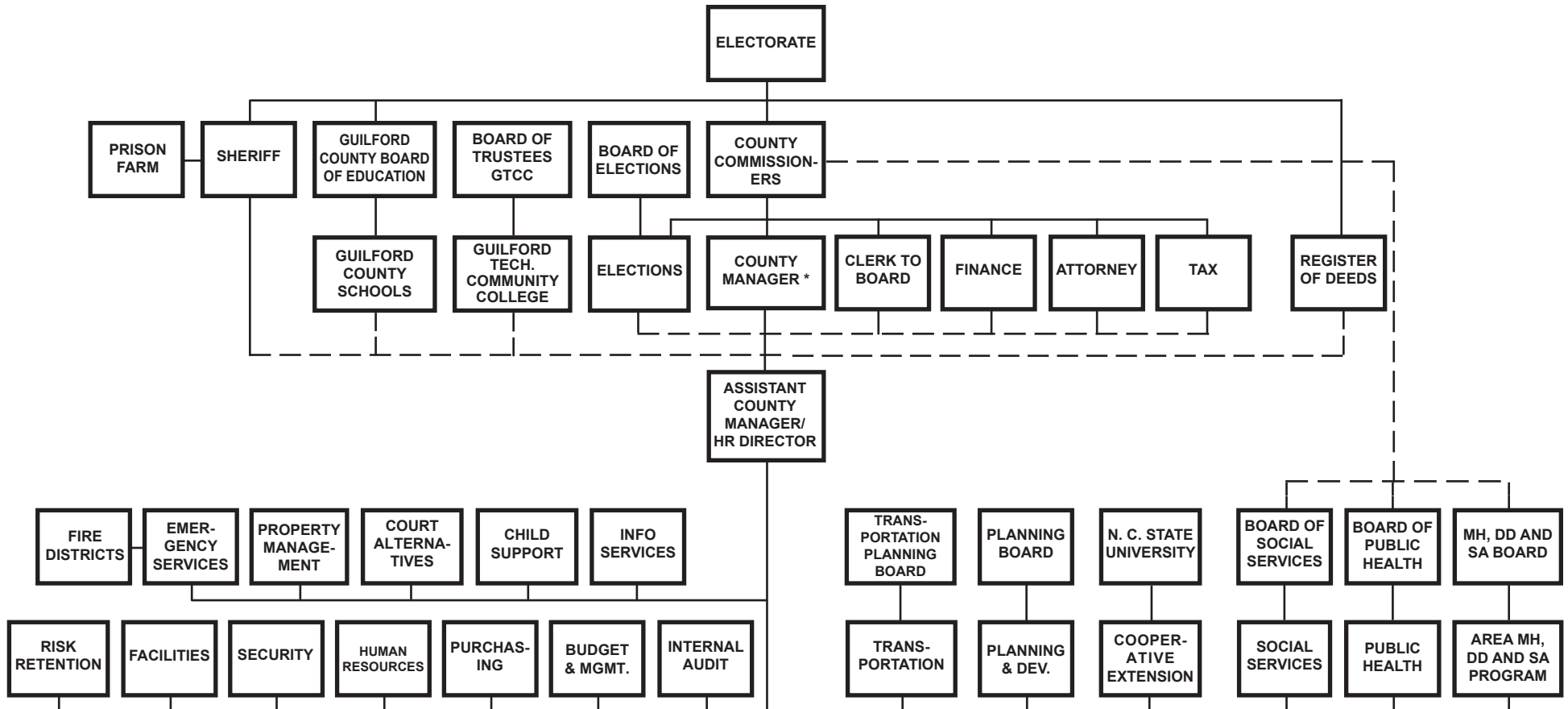


2008-09 ORGANIZATIONAL CHART GUILFORD COUNTY, NORTH CAROLINA



* Information from any source for the Board of Commissioners regarding County policy and substantial fiscal matters is generally through the County Manager, the chief administrative officer of the County on behalf of the Board.

NOTE: Dotted line denotes substantial fiscal and/or appointive control. As shown above, the Assistant County Manager/HR Director serves in a coordinative capacity regarding the activities of the agencies shown.