



INSTRUCTIONS

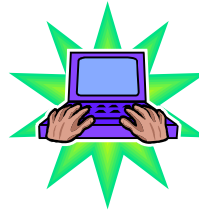
You may reach the Guilford County Inspection Scheduling System by dialing 641-3833 from any touch-tone generating telephone.

1. You will be asked to enter your permit tracking number. (Ex: 209512428390), it will verify your permit number.
2. You will then be asked to enter the three-digit inspection code number which can be found within this handout. Follow this entry with the # key. (Ex: 105#)
3. You will then be given the choice of scheduling your inspection in sequence on the next work day by entering "1". You may pre-schedule for a future date by entering the 4-digit month and day followed by the # key. (Ex: 1005# is October 5).
4. Your request will then be verified by inspection type, and date which you will acknowledge as correct.

Thank you for using the IVR System.

GUILFORD COUNTY INSPECTIONS DIRECTORY

IVR	(336) 641-3833
Plumbing/Mechanical	(336) 641-3707
Electrical	(336) 641-3707
Building	(336) 641-3707
Erosion Control	(336) 641-3803
Fire Marshal	(336) 641-7565
Septic Tank/Well	(336) 641-7613



INSPECTION RESULTS AVAILABLE ON-LINE

For your convenience you may check your inspection results and re-schedule inspections on-line. Please visit us on the web at www.co.guilford.nc.us

Select "On-line Services," then "On-line Permitting System" under "Planning and Development."



GUILFORD COUNTY'S Automated Inspection Request System



About IVR

YOU MUST HAVE A VALID TRACKING NUMBER TO SCHEDULE AN INSPECTION ON THE IVR SYSTEM.

IVR (Interactive Voice Response) is an automated telephone answering system that allows you to schedule next day inspections any time before 11:00 PM. **IVR** cannot accept calls between 11:00 PM and 6:00 A.M. and during scheduled maintenance, usually Sunday morning. Calls to the system can be made from your home, office, job site, or vehicle by touch-tone phone. You have the flexibility of pre-scheduling your inspection to suit your needs.

Inspections which are processed on the **IVR** System before 11:00 P.M. will be scheduled on the next workday or on your prescheduled date. Weekend and Holiday calls will be scheduled for the next workday. **IVR** cannot schedule a time for a concrete inspection. You must pre-schedule your concrete inspection, and then call the Building Inspector before 9:00 A.M., on the day of your inspection, to schedule a time. Please note you can only schedule a time when pouring concrete.

Your comments are welcomed. Any contractor or association desiring instructions on the use of **IVR** should call **(336) 641-3334**.

**CALL IVR
(336) 641-3833**

YOU MUST HAVE A TOUCH-TONE PHONE TO SCHEDULE AN INSPECTION ON THE IVR SYSTEM.

RE-INSPECTIONS:

To schedule a re-inspection, you should enter the same code as the initial inspection. Examples: Re-inspection of Framing, enter 125; Plumbing Final, enter 325.

IVR SYSTEM INSPECTION CODES

BUILDING

105	Footing and Location
110	Slab
115	Waterproofing and Drain Tile
120	Foundation/Bolt & Tie Down
125	Framing
126	Insulation
127	Exterior Framing
130	Building Final
135	Pool Location
136	Pool Fence
140	Investigation/Consultation
145	Manufactured Home-Private Lot
146	Manufactured Home-Park
155	Change of Occupancy
160	Temporary Release
165	Fireplace
170	Rated Separation Wall
180	Final Land Use/Occupancy/Event
180	Commercial LP Tank

FUEL PIPING

210	Gas Piping Rough
220	Gas Piping Final
230	Air Test
240	Gas Logs/Air Test/Gas Piping Final
250	LP Tank/Air Test/Gas Piping Final

PLUMBING

305	Sewer Connection
310	Water Connection
315	Plumbing Rough-Under Slab
320	Plumbing Rough
325	Plumbing Final
330	Manufactured Home-Private Lot
331	Manufactured Home-Park
335	Partial Plumbing Rough
340	Investigation/Consultation
355	Change of Occupancy

MECHANICAL

415	Heating Rough-Under Slab
420	Heating Rough
425	Heating Final
430	Manufactured Home-Private Lot
431	Manufactured Home-Park
435	Partial Mechanical Rough
440	Investigation/Consultation
455	Change of Occupancy

ELECTRICAL

505	Saw Service
510	Electrical Rough-Under Slab
515	Electrical Rough
520	Electrical Final
525	Partial Electrical Rough
530	Manufactured Home-Park
535	Manufactured Home-Private Lot
540	Investigation/Consultation
545	LCD
546	Service Change
550	Swimming Pool Final
551	Swimming Pool Bonding
555	Change of Occupancy
560	Temporary Release

FIRE MARSHAL

605	Fire Alarm System
610	Tank
615	Sprinkler
619	Partial Release
620	Final
640	Investigation/Consultation
655	Change of Occupancy

WATERSHED

700	WTR-Temporary C.O.
705	WTR-Final C.O.
710	WTR-Subdivision Final Plat
715	WTR-Final Acceptance
720	WTR-Annual Inspection
725	WTR-Floodplain Permit
735	WTR-Drain Complaint Invest
740	WTR-Stormwtr / Watershd Invt.
745	WTR-Stream Buffer Invest
750	WTR-Illicit Dischrg Invest

SOIL SCIENCE

805	Devices Release
810	Routine
820	Final
840	Investigation/Consultation
855	Site Plan Compliance
860	Temporary Release
