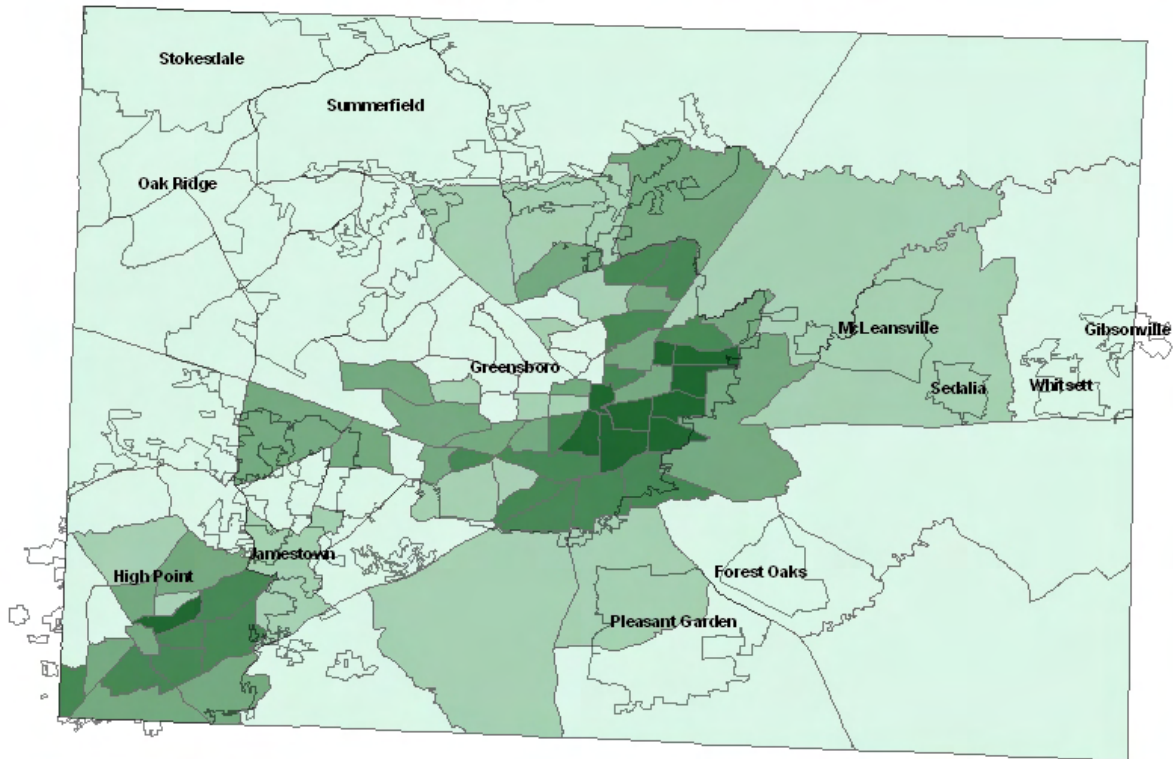
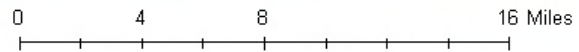
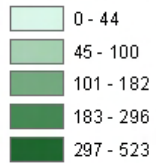




## Gonorrhea Rates by Census Tract Guilford County, NC 2003-2007



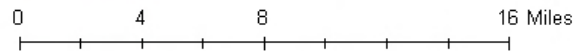
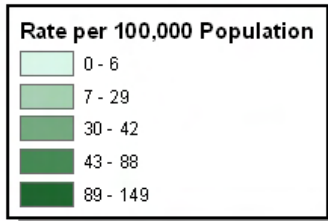
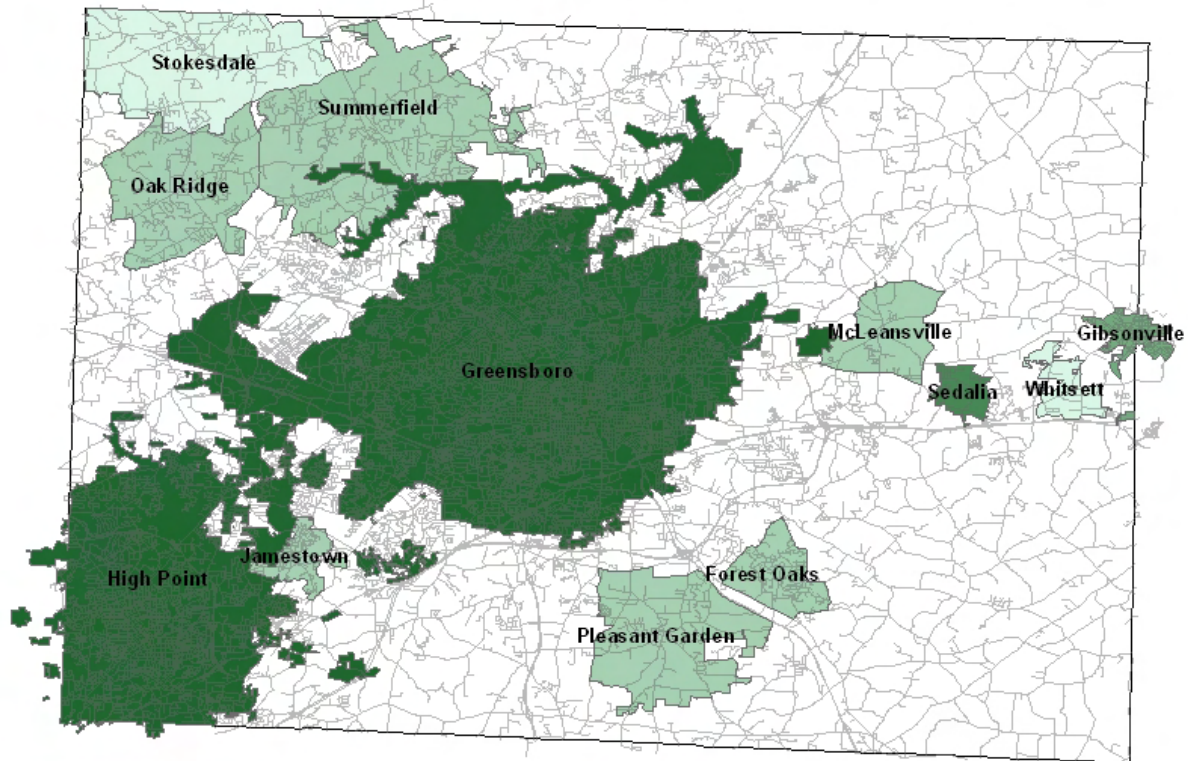
### Rate per 100,000 Population



Source: US Census Bureau, 2000; NC State Center for Health Statistics, STD File, 2007



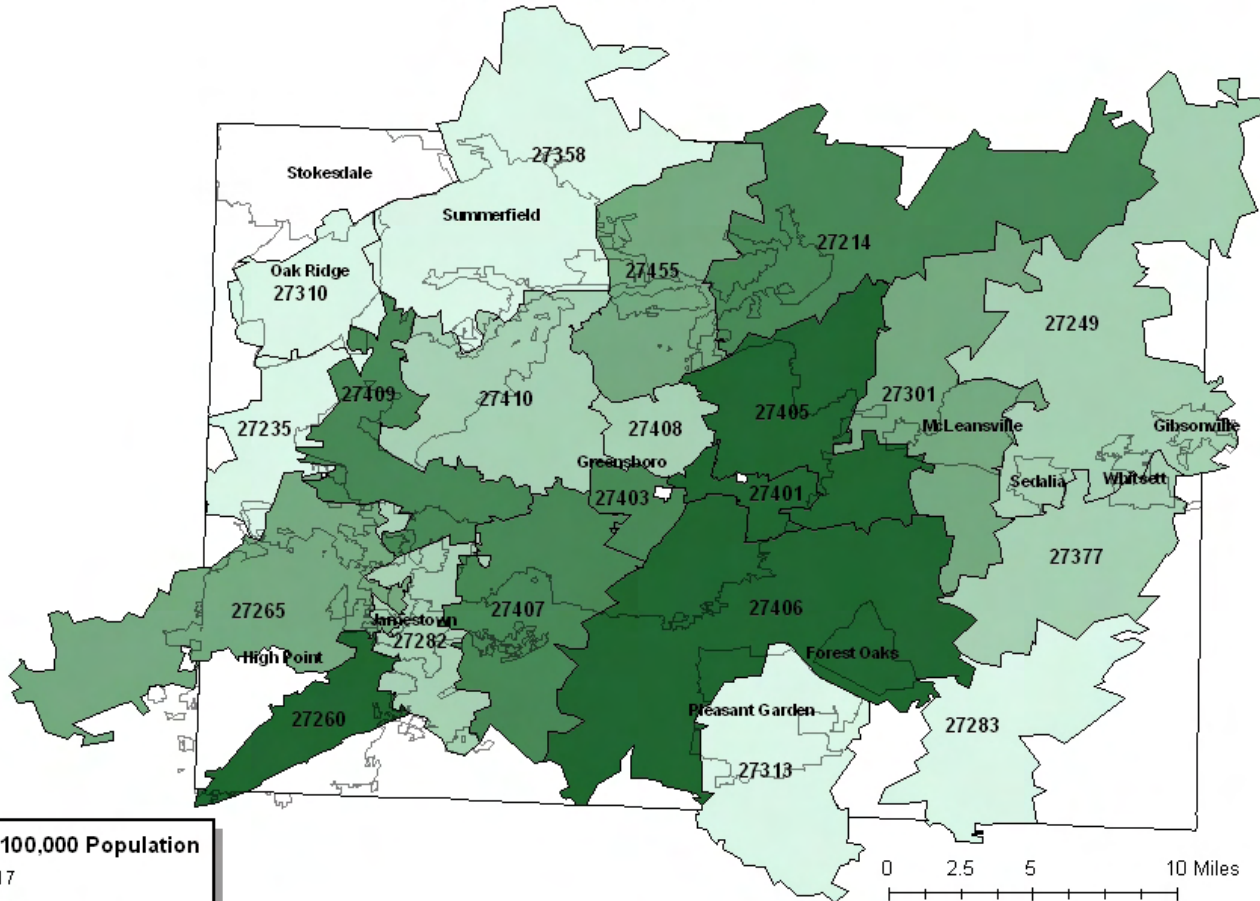
## Gonorrhea Rates by Municipalities Guilford County, NC 2003-2007



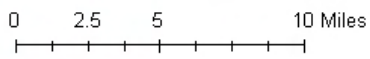
Source: US Census Bureau, 2000; NC State Center for Health Statistics, STD File, 2007



### Gonorrhea Rates by Major Zip Codes Guilford County, NC 2003-2007



Rate per 100,000 Population	
0 - 17	Lightest Green
18 - 38	Light Green
39 - 65	Medium Green
66 - 98	Dark Green
99 - 261	Darkest Green



Source: US Census Bureau, 2000; NC State Center for Health Statistics, STD File, 2007