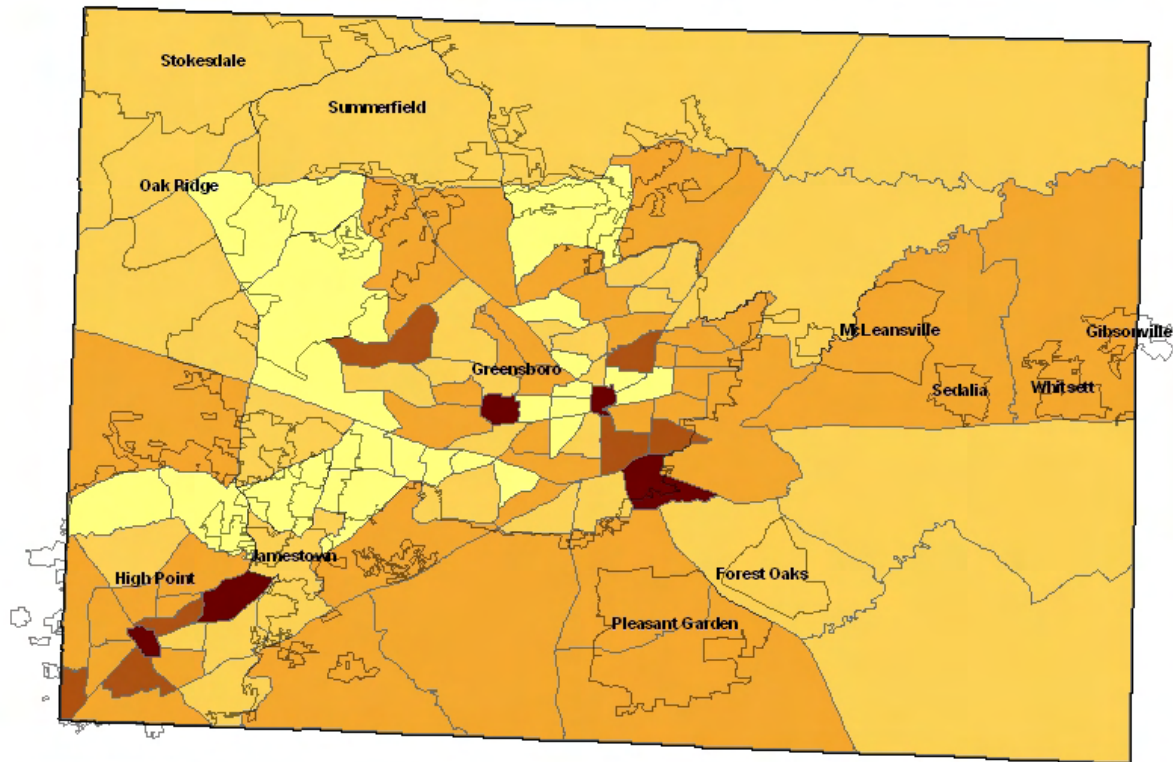
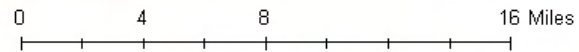




Heart Disease Mortality Rates by Census Tract Guilford County, NC 2002-2006



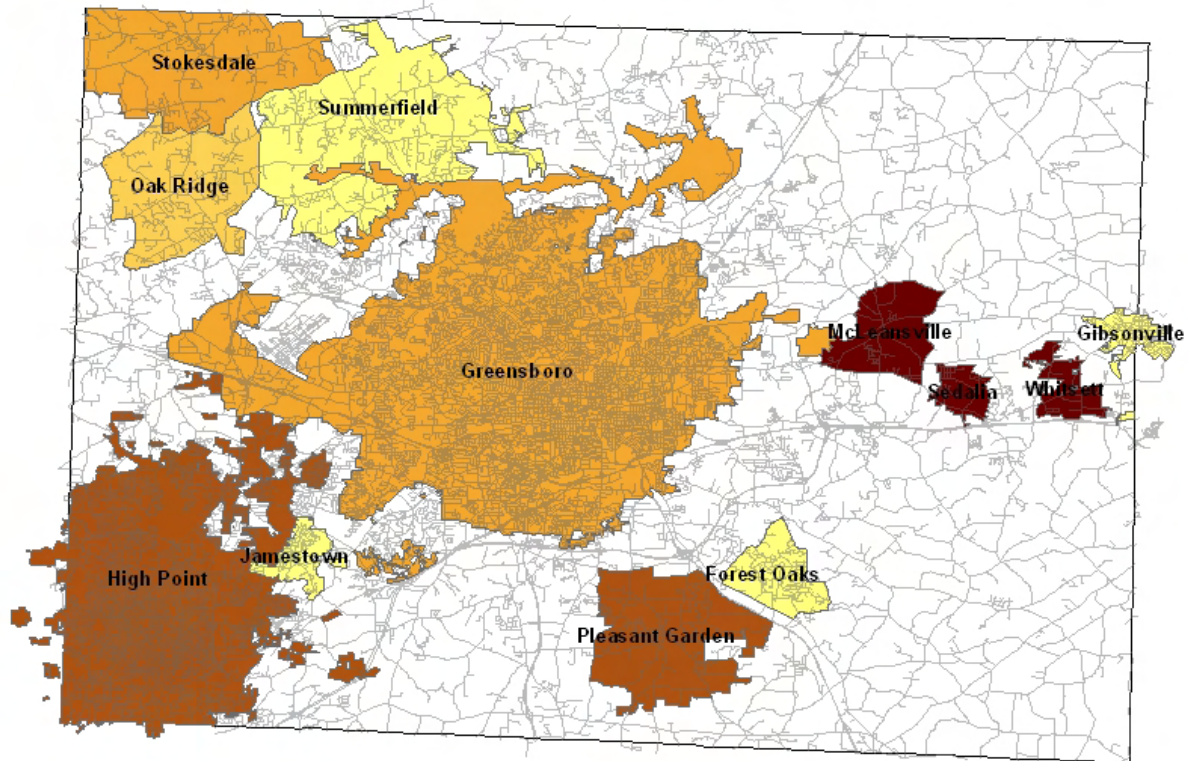
Deaths per 100,000 Population	
21 - 110	(Lightest yellow)
111 - 174	(Light orange)
175 - 266	(Medium orange)
267 - 403	(Dark orange)
404 - 628	(Darkest orange/brown)



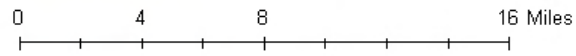
Source: US Census Bureau, 2000; NC State Center for Health Statistics, NC Mortality Files, 2002-2006



Heart Disease Mortality Rates by Municipalities Guilford County, NC 2002-2006



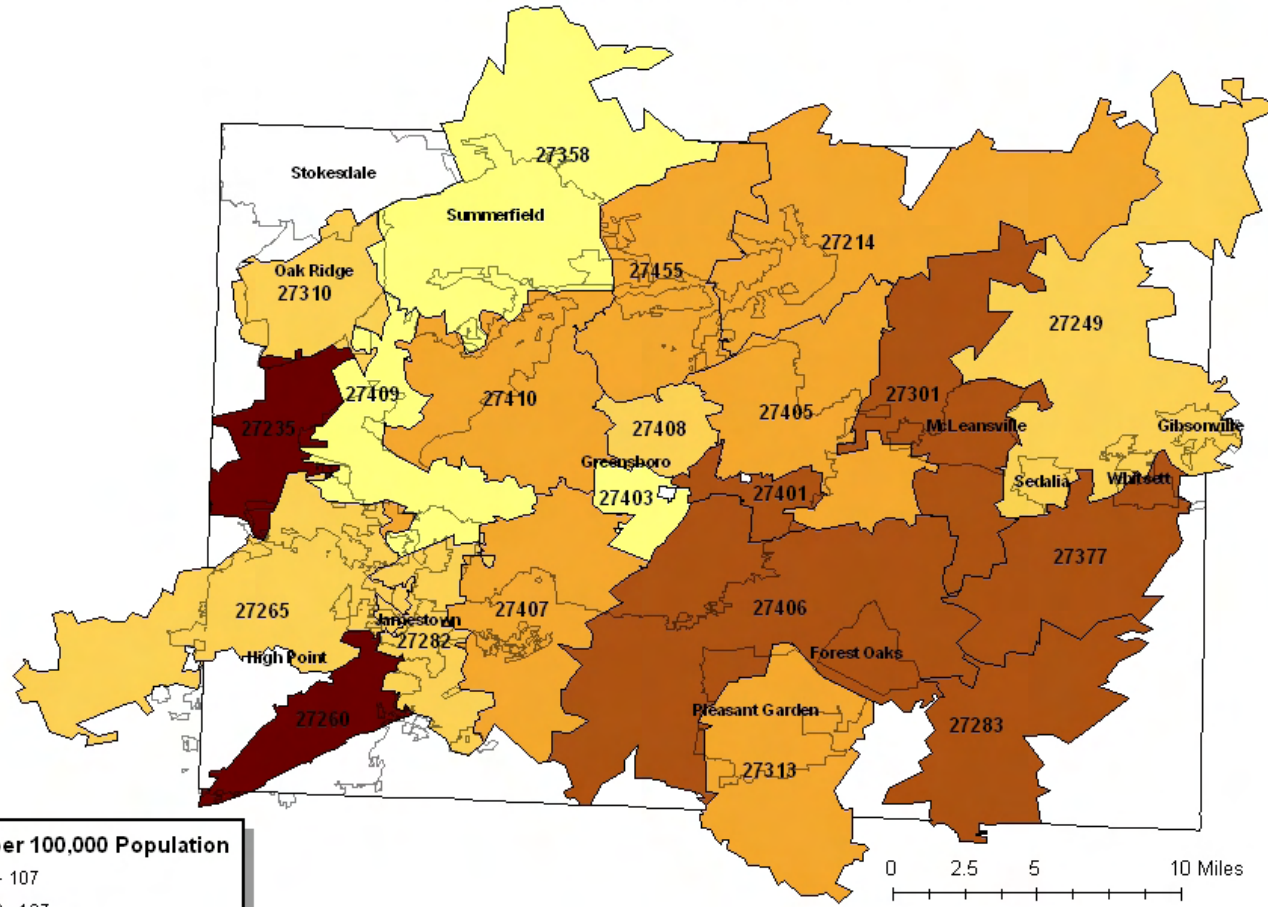
Deaths per 100,000 Population	
83 - 100	Lightest Yellow
101 - 123	Light Orange
124 - 167	Orange
168 - 197	Dark Orange/Brown
198 - 345	Dark Red



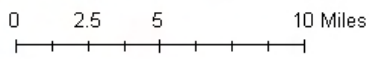
Source: US Census Bureau, 2000; NC State Center for Health Statistics, NC Mortality Files, 2002-2006



Heart Disease Mortality Rates by Major Zip Codes Guilford County, NC 2002-2006



Deaths per 100,000 Population	
81 - 107	Lightest Yellow
108 - 137	Light Orange
138 - 176	Orange
177 - 207	Dark Orange/Brown
208 - 278	Darkest Brown



Source: US Census Bureau, 2000; NC State Center for Health Statistics, NC Mortality Files, 2002-2006