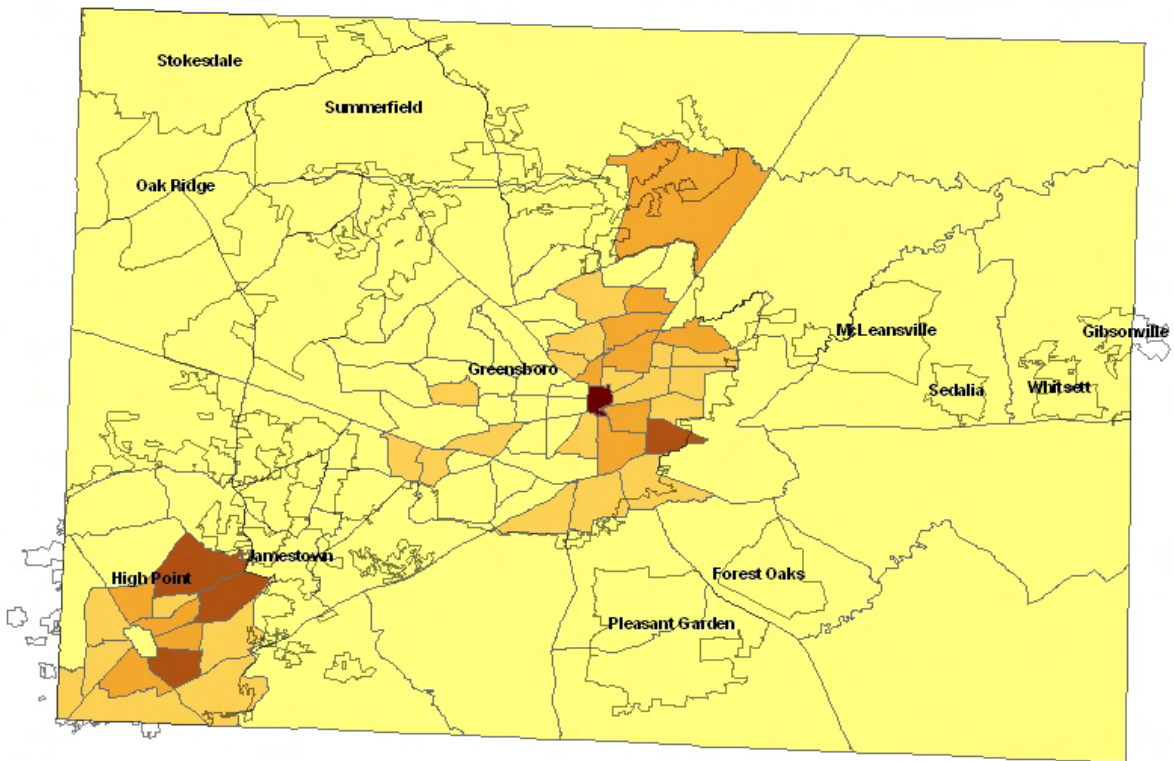

Section III

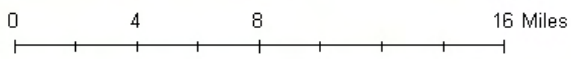
Sexually Transmitted Diseases



HIV Disease* Mortality Rates by Census Tract Guilford County, NC 2002-2006



Deaths per 100,000 Population	
0 - 4	Lightest Yellow
5 - 13	Light Orange
14 - 24	Orange
25 - 34	Dark Orange
35 - 66	Dark Red

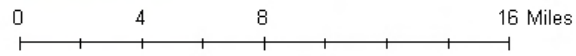
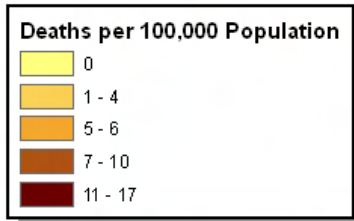
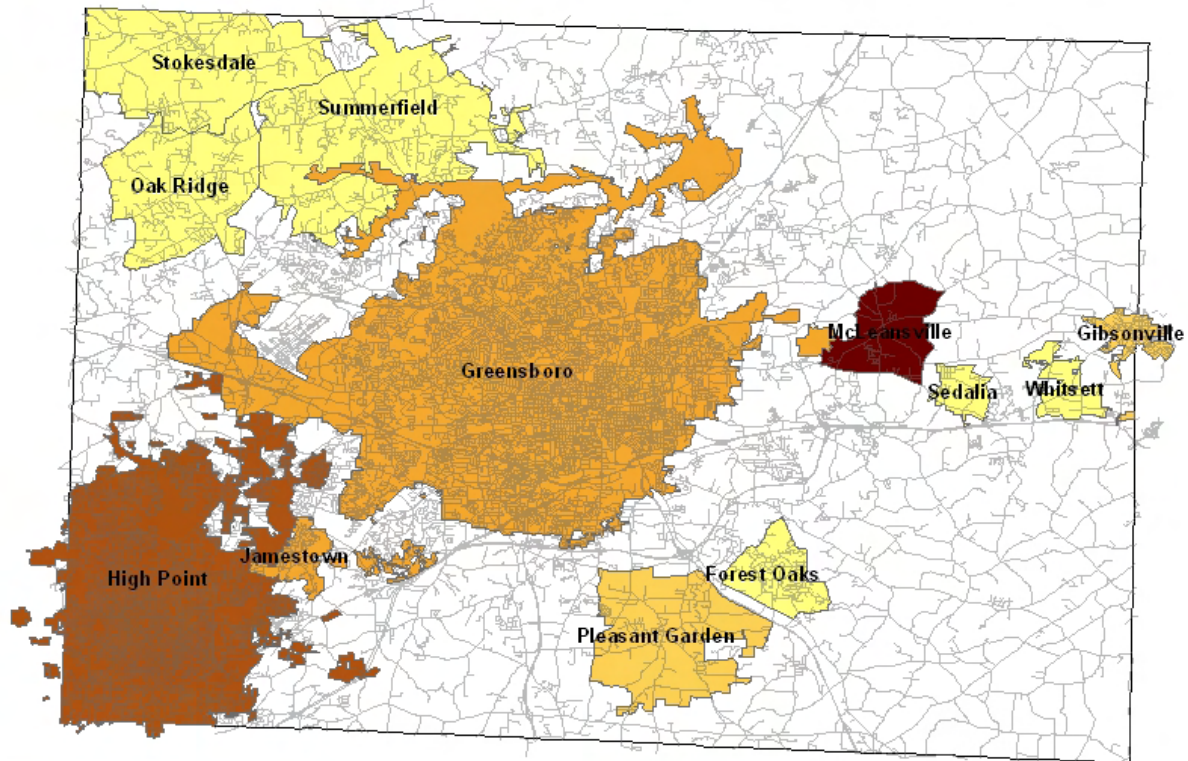


* HIV Disease includes all cases of HIV and AIDS diagnoses.

Source: US Census Bureau, 2000; NC State Center for Health Statistics, NC Mortality Files, 2002-2006



HIV Disease* Mortality Rates by Municipalities Guilford County, NC 2002-2006

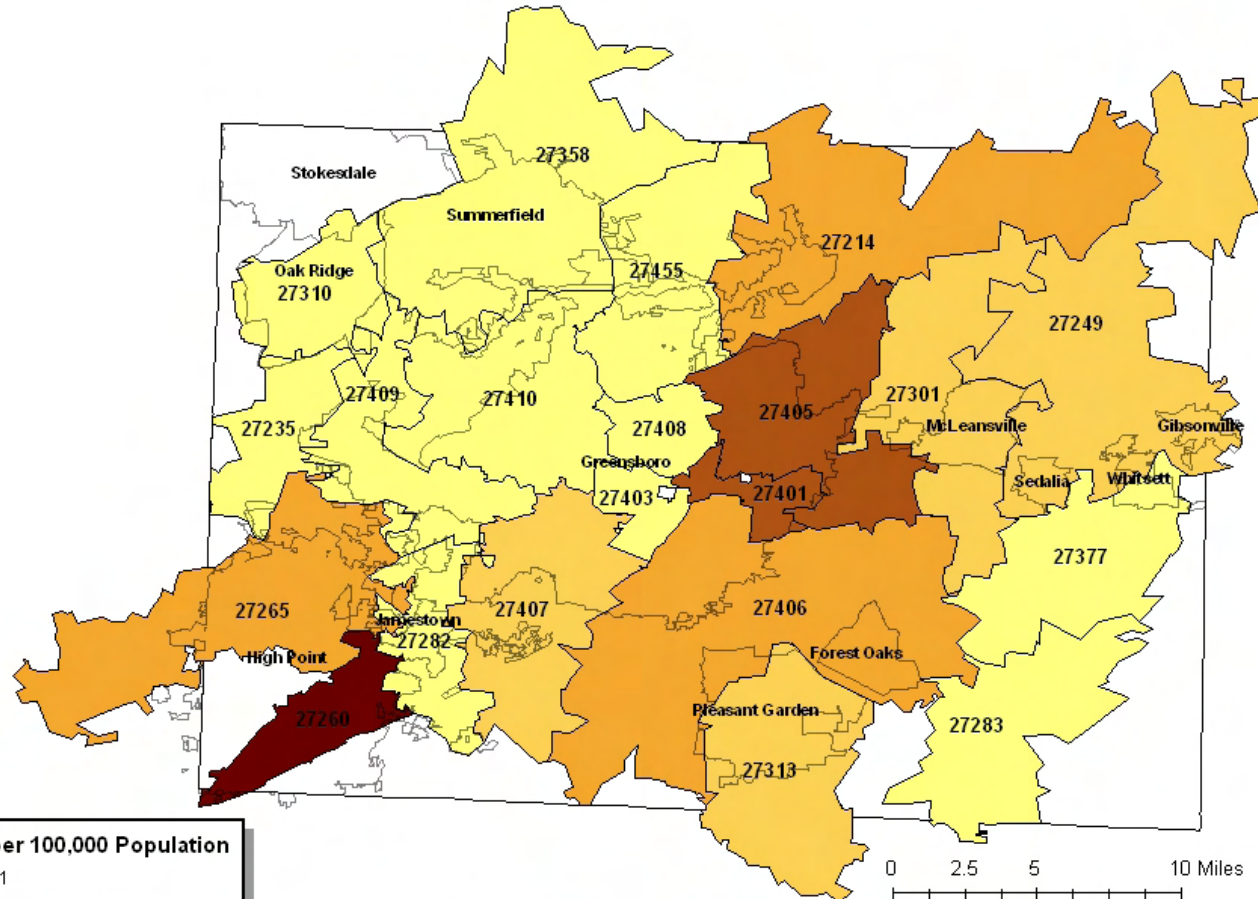


* HIV Disease includes all cases of HIV and AIDS diagnoses.

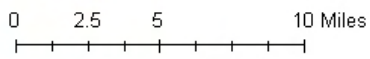
Source: US Census Bureau, 2000; NC State Center for Health Statistics, NC Mortality Files, 2002-2006



HIV Disease* Mortality Rates by Major Zip Codes Guilford County, NC 2002-2006



Deaths per 100,000 Population	
0 - 1	Lightest Yellow
2 - 3	Light Orange
4 - 6	Orange
7 - 13	Dark Orange
14 - 19	Darkest Brown

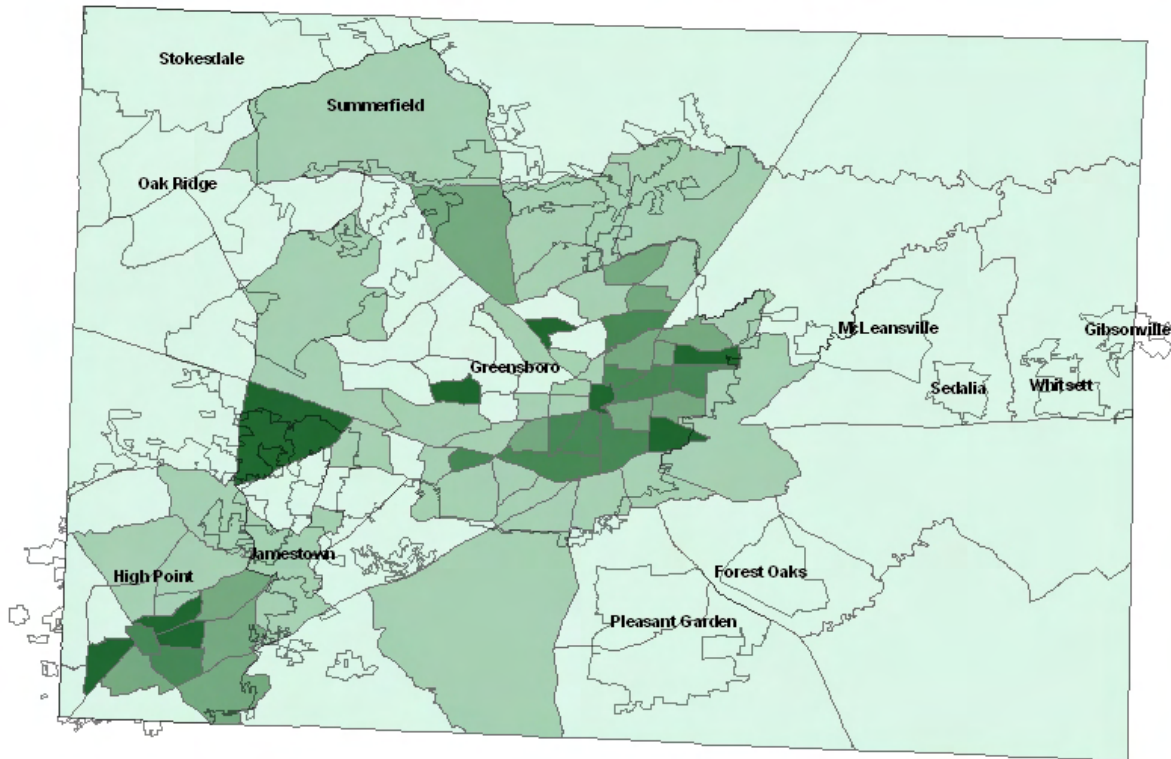


* HIV Disease includes all new cases of HIV and AIDS diagnoses.

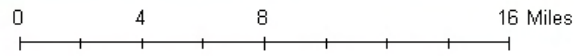
Source: US Census Bureau, 2000; NC State Center for Health Statistics, NC Mortality Files, 2002-2006



HIV Disease Rates* by Census Tract Guilford County, NC 2003-2007



Rate per 100,000 Population	
0 - 12	(Lightest green)
13 - 30	(Light green)
31 - 46	(Medium green)
47 - 67	(Dark green)
68 - 99	(Darkest green)

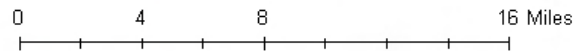
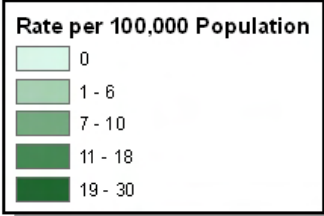
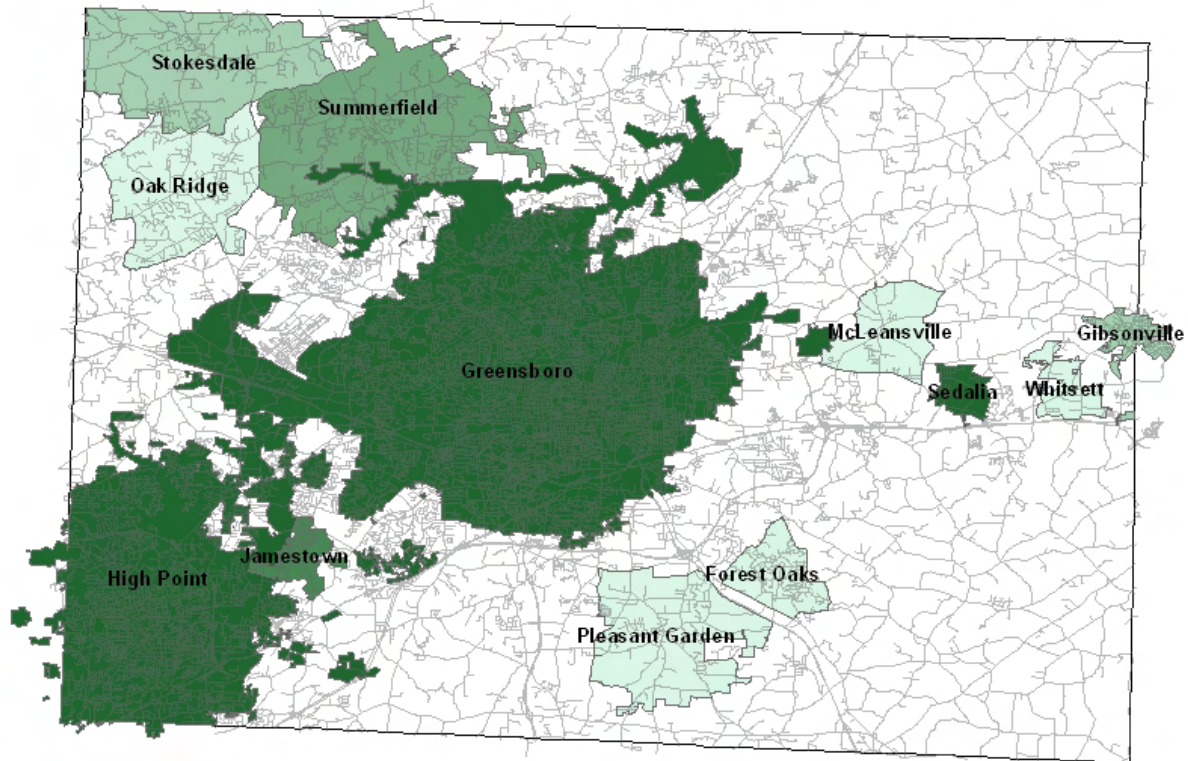


* HIV Disease includes all new cases of HIV and AIDS diagnoses.

Source: US Census Bureau, 2000; NC State Center for Health Statistics, HIV File, 2007



HIV Disease Rates* by Municipalities Guilford County, NC 2003-2007

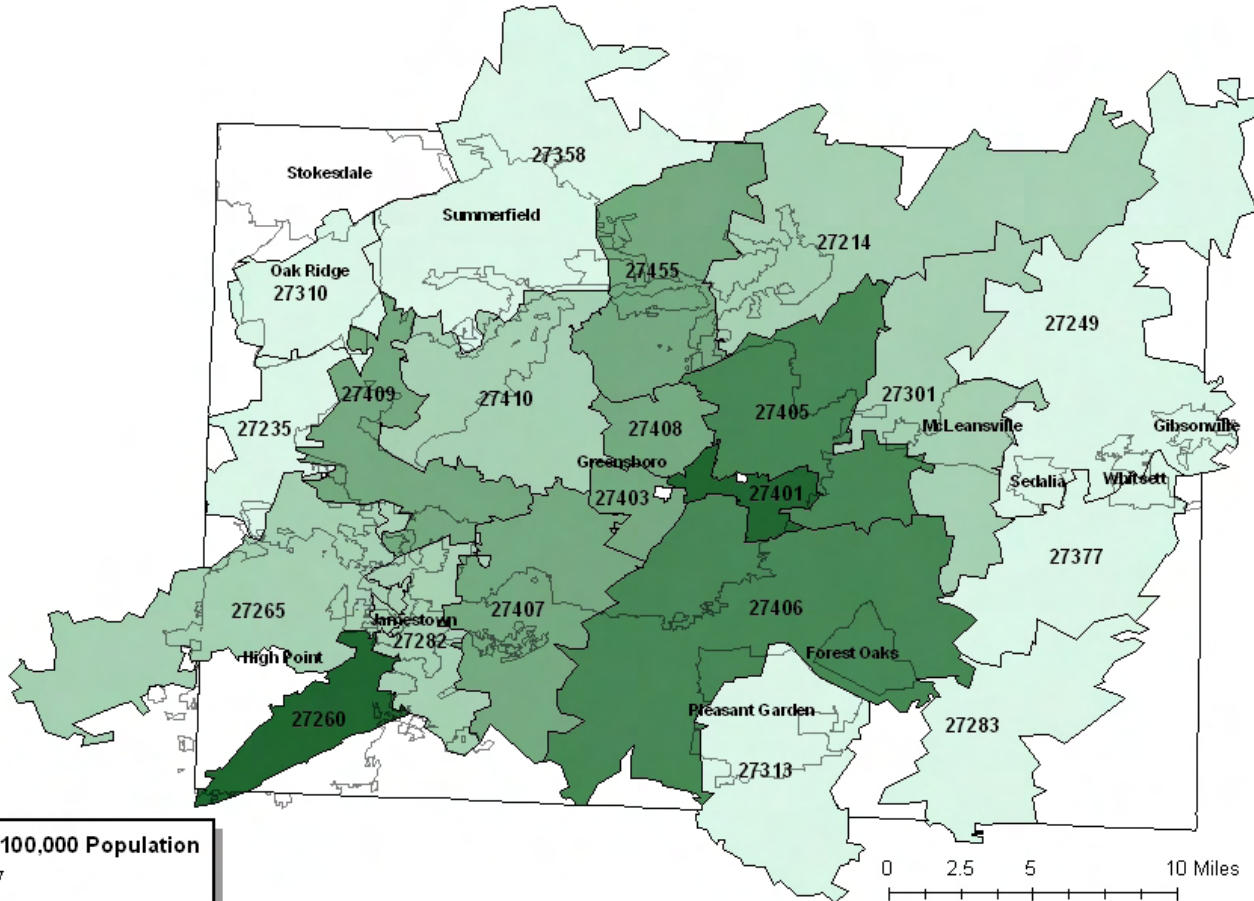


* HIV Disease includes all cases of HIV and AIDS diagnoses.

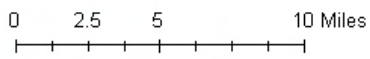
Source: US Census Bureau, 2000; NC State Center for Health Statistics, STD File, 2007



HIV Disease Rates* by Major Zip Codes Guilford County, NC 2003-2007



Rate per 100,000 Population	
0 - 7	Lightest Green
8 - 15	Light Green
16 - 24	Medium Green
25 - 36	Dark Green
37 - 50	Darkest Green



* HIV Disease includes all new cases of HIV and AIDS diagnoses.

Source: US Census Bureau, 2000; NC State Center for Health Statistics, HIV File, 2007