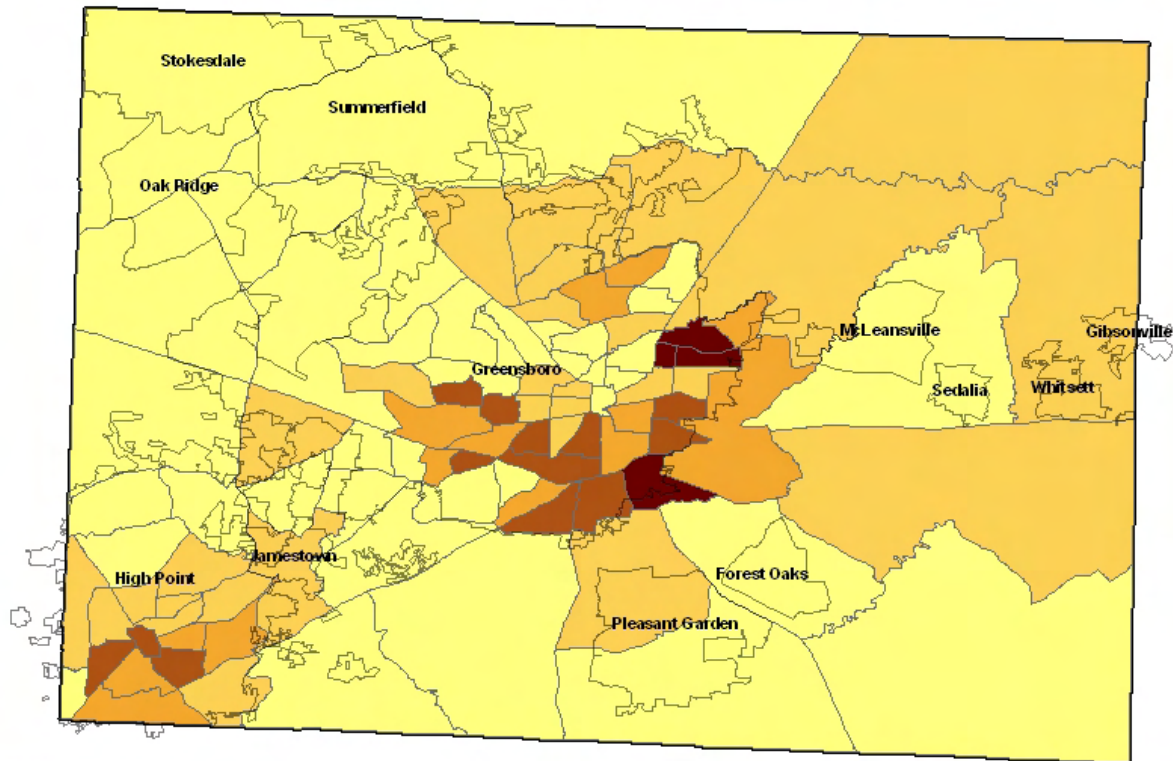
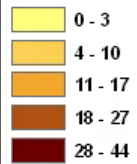




## Homicide Mortality Rates by Census Tract Guilford County, NC 2002-2006



### Deaths per 100,000 Population

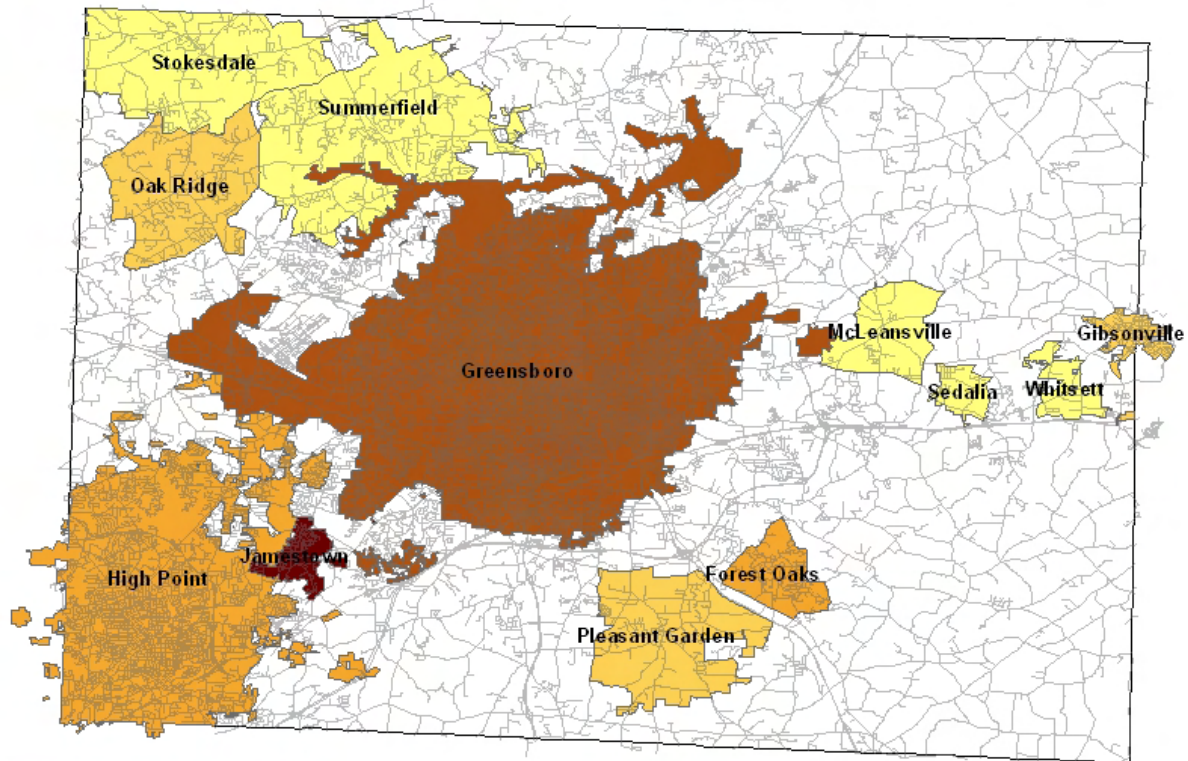


0 4 8 16 Miles

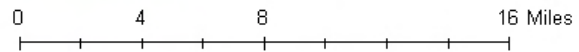
Source: US Census Bureau, 2000; NC State Center for Health Statistics, NC Mortality Files, 2002-2006



### Homicide Mortality Rates by Municipalities Guilford County, NC 2002-2006



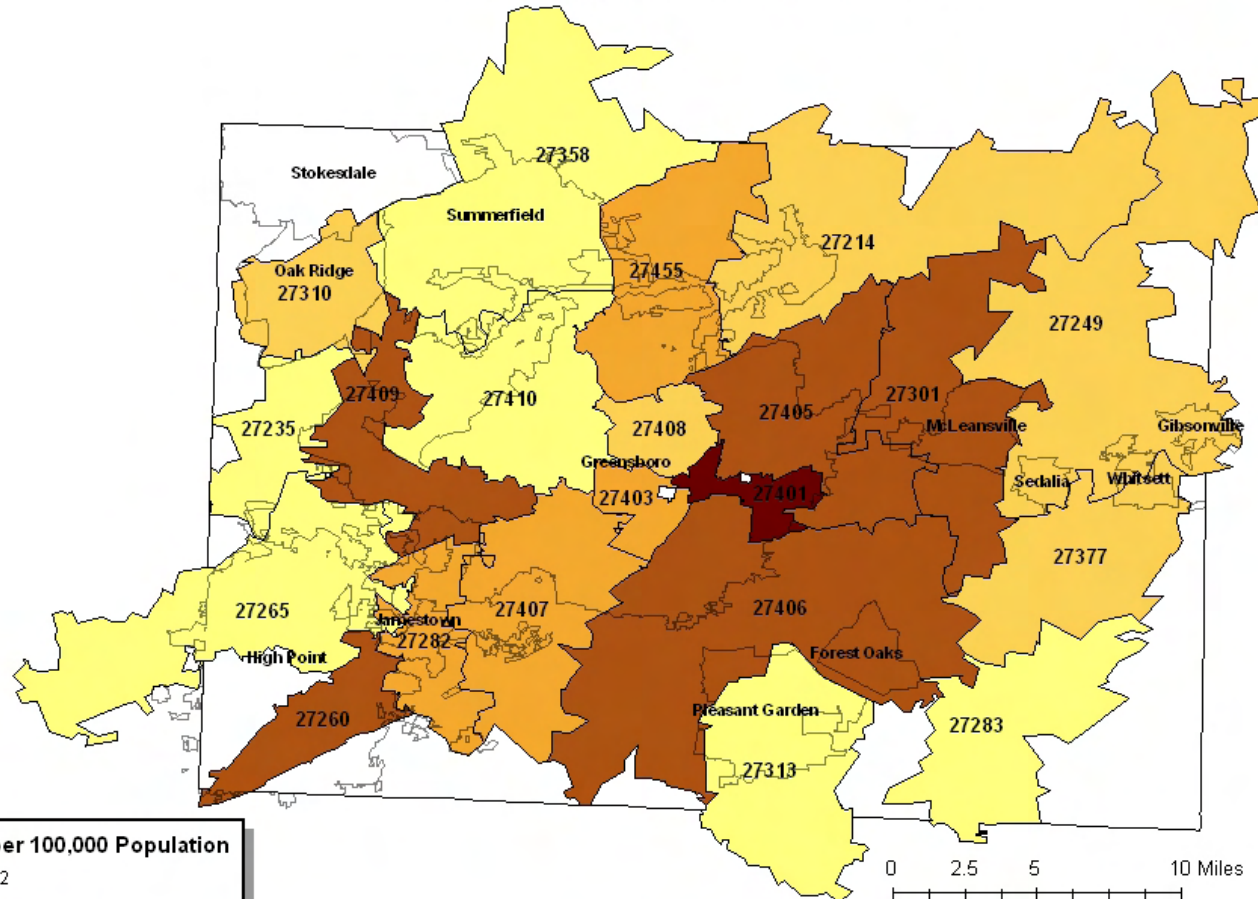
Deaths per 100,000 Population	
0	Lightest Yellow
1 - 5	Light Orange
6 - 7	Orange
8 - 10	Dark Orange
11 - 18	Dark Red



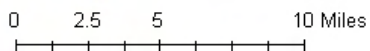
Source: US Census Bureau, 2000; NC State Center for Health Statistics, NC Mortality Files, 2002-2006



### Homicide Mortality Rates by Major Zip Codes Guilford County, NC 2002-2006



Deaths per 100,000 Population	
0 - 2	Light Yellow
3 - 5	Yellow-Orange
6 - 8	Orange
9 - 13	Brown
14 - 16	Dark Brown



Source: US Census Bureau, 2000; NC State Center for Health Statistics, NC Mortality Files, 2002-2006