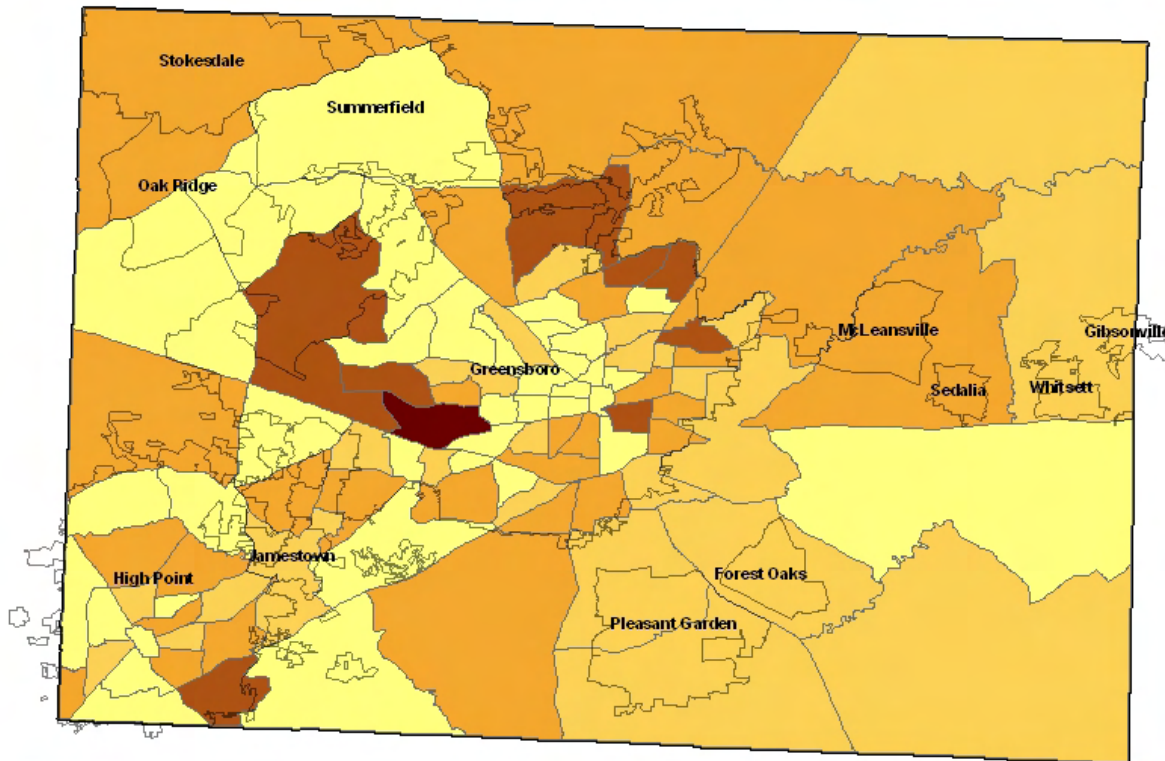
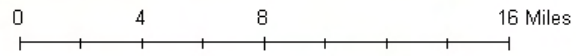




Infant Deaths by Census Tract Guilford County, NC 2002-2006



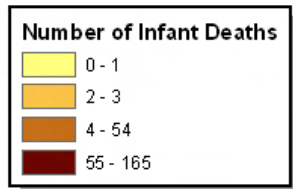
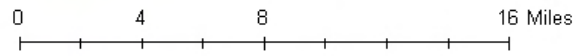
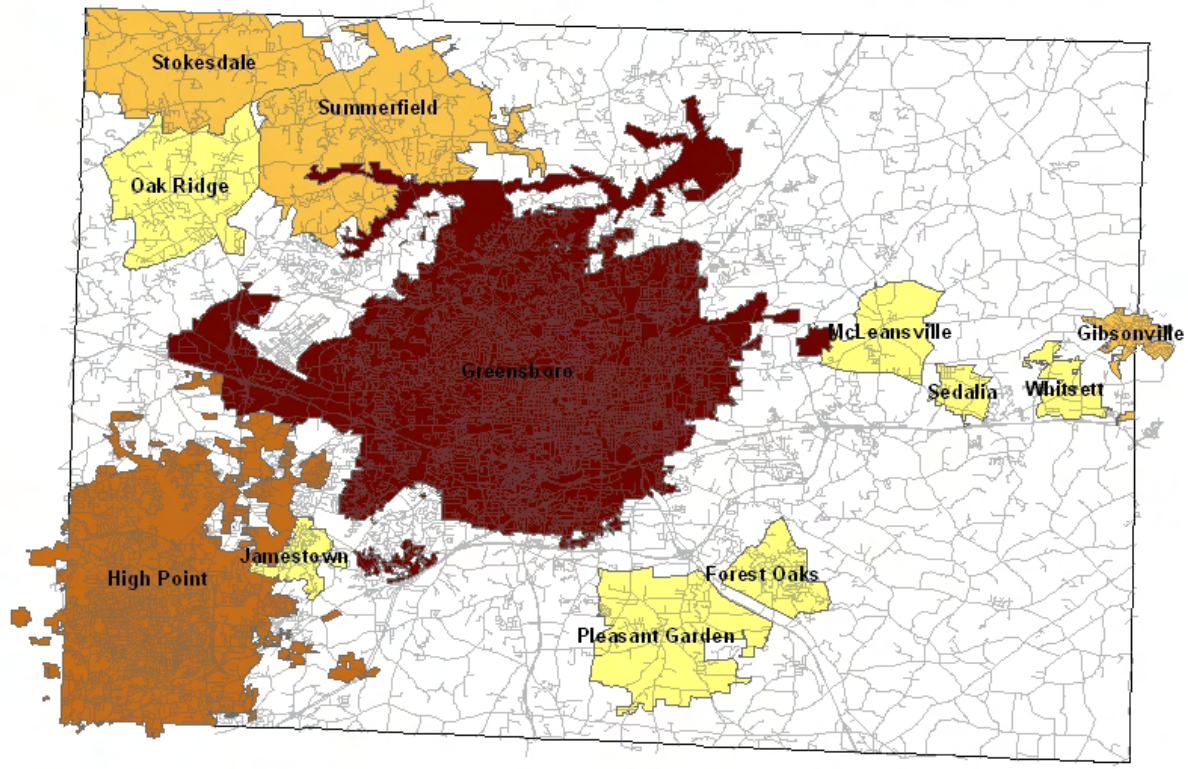
Number of Infant Deaths	
0 - 1	(Lightest yellow)
2 - 3	(Light orange)
4 - 5	(Medium orange)
6 - 8	(Dark orange)
9 - 11	(Darkest orange)



Source: US Census Bureau, 2000; NC State Center for Health Statistics, NC Mortality Files, 2002-2006



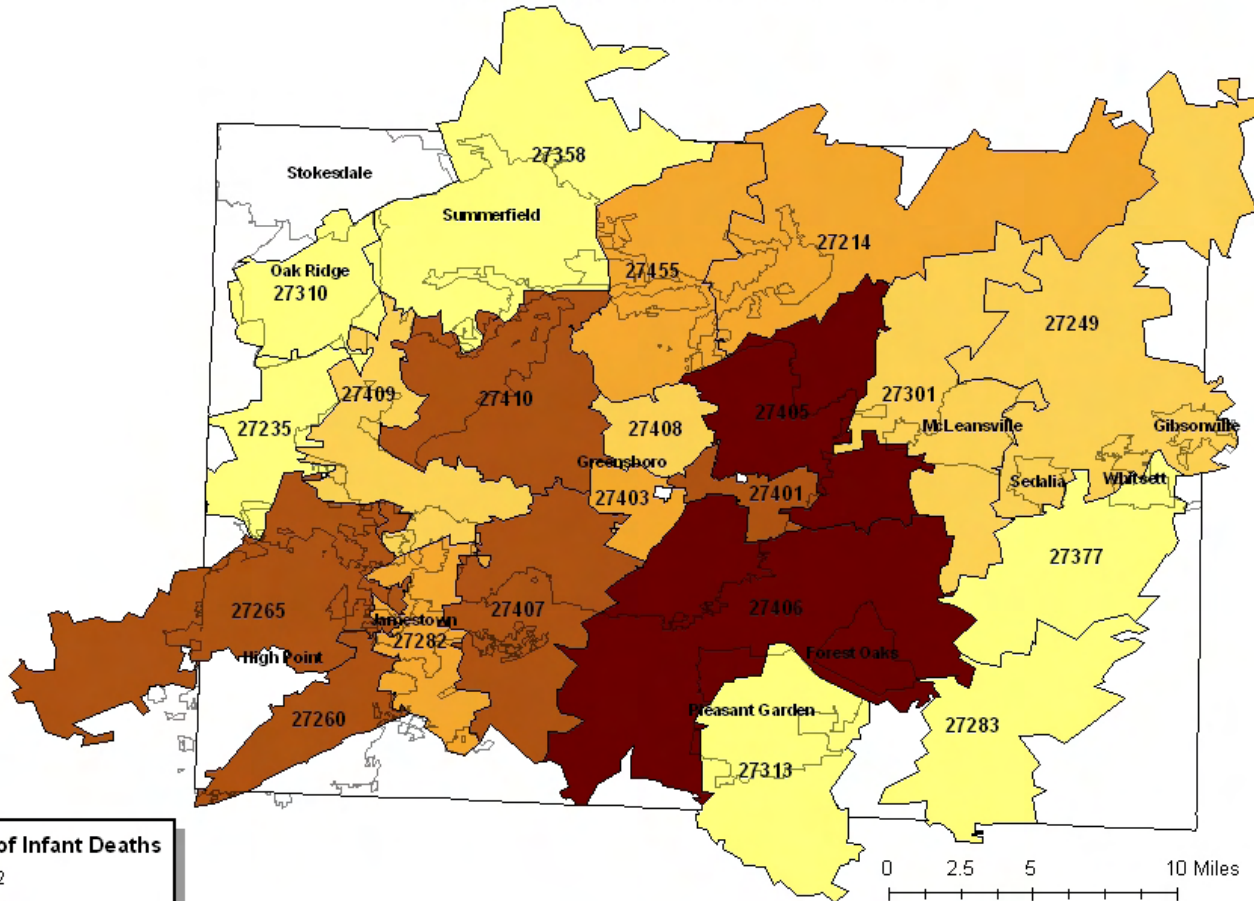
Infant Deaths by Municipalities Guilford County, NC 2002-2006



Source: US Census Bureau, 2000; NC State Center for Health Statistics, NC Mortality Files, 2002-2006



Infant Deaths by Major Zip Codes Guilford County, NC 2002-2006

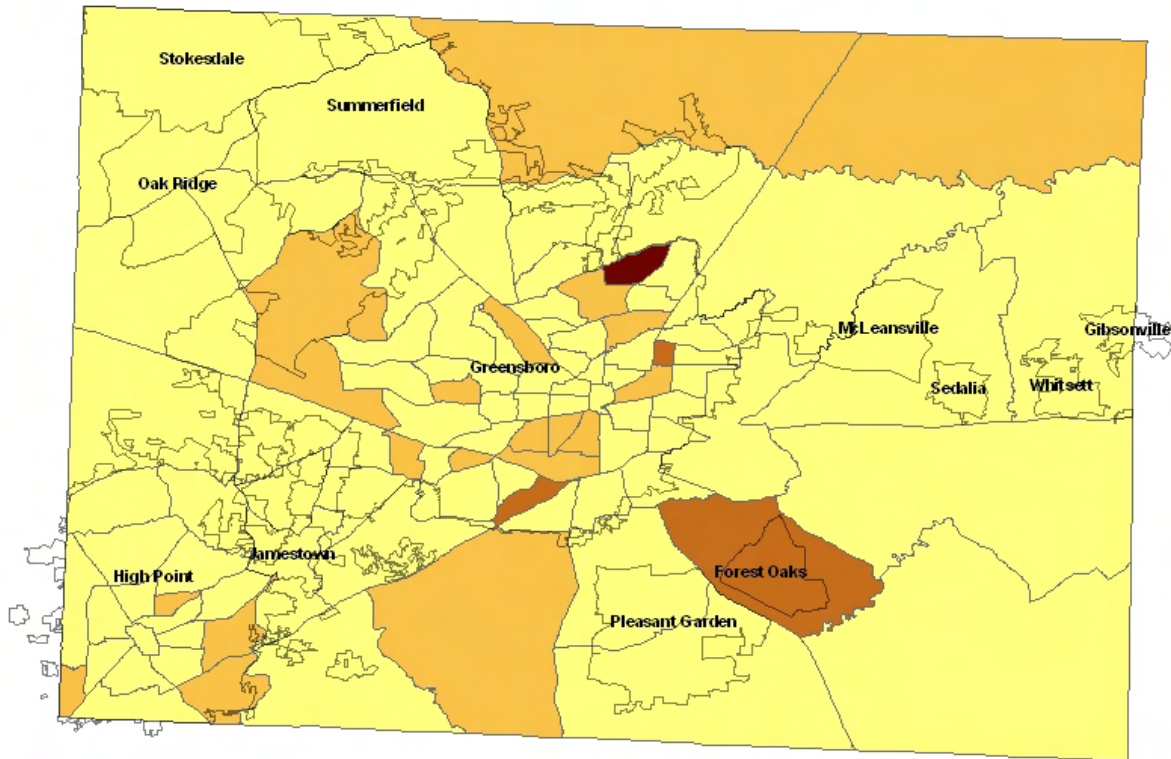


Number of Infant Deaths	
1 - 2	Lightest Yellow
3 - 4	Light Orange
5 - 13	Orange
14 - 29	Dark Orange/Brown
30 - 47	Dark Red/Brown

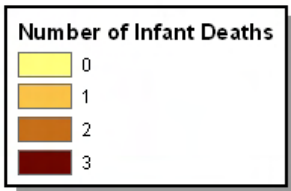
Source: US Census Bureau, 2000; NC State Center for Health Statistics, NC Mortality Files, 2002-2006



Infant Deaths to Teenage Mothers by Census Tract Guilford County, NC 2002-2006



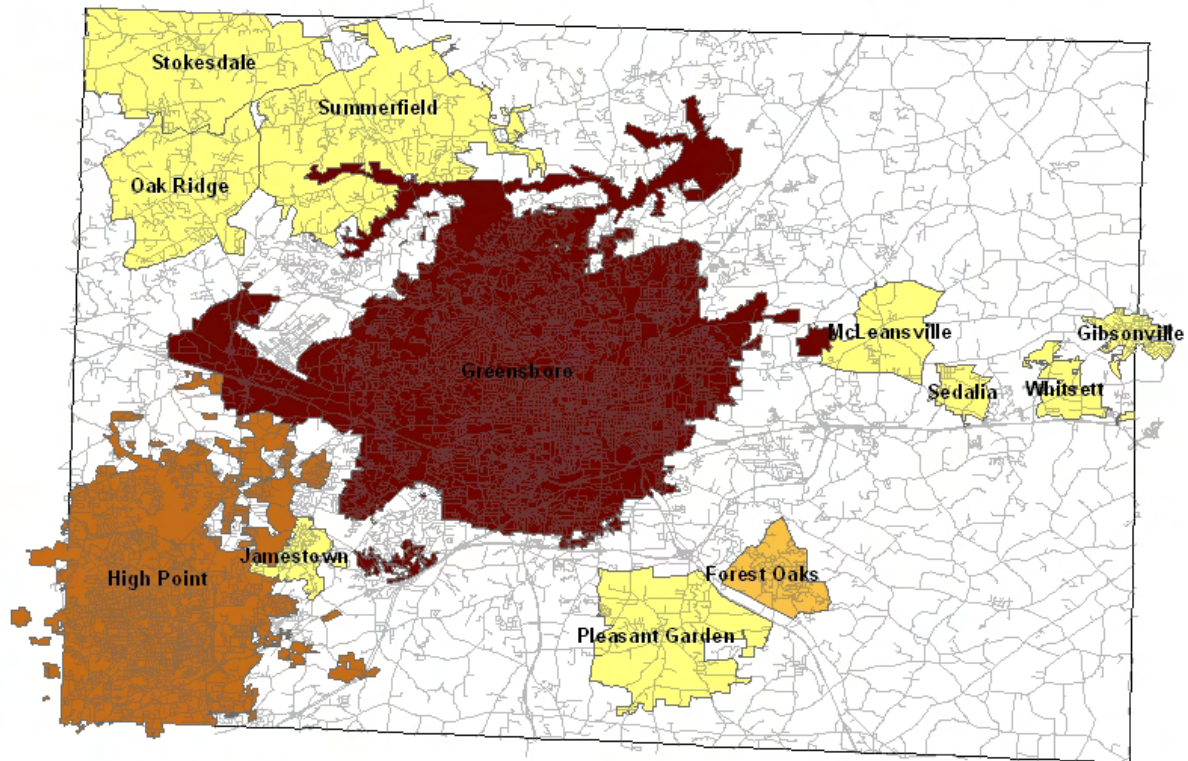
0 4 8 16 Miles



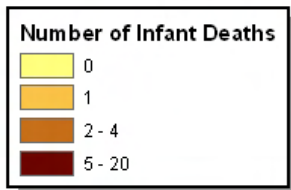
Source: US Census Bureau, 2000; NC State Center for Health Statistics, NC Mortality Files, 2002-2006



Infant Deaths to Teenage Mothers by Municipalities Guilford County, NC 2002-2006



0 4 8 16 Miles



Source: US Census Bureau, 2000; NC State Center for Health Statistics, NC Mortality Files, 2002-2006

