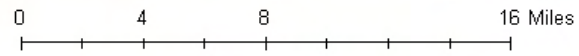
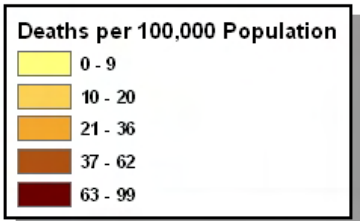
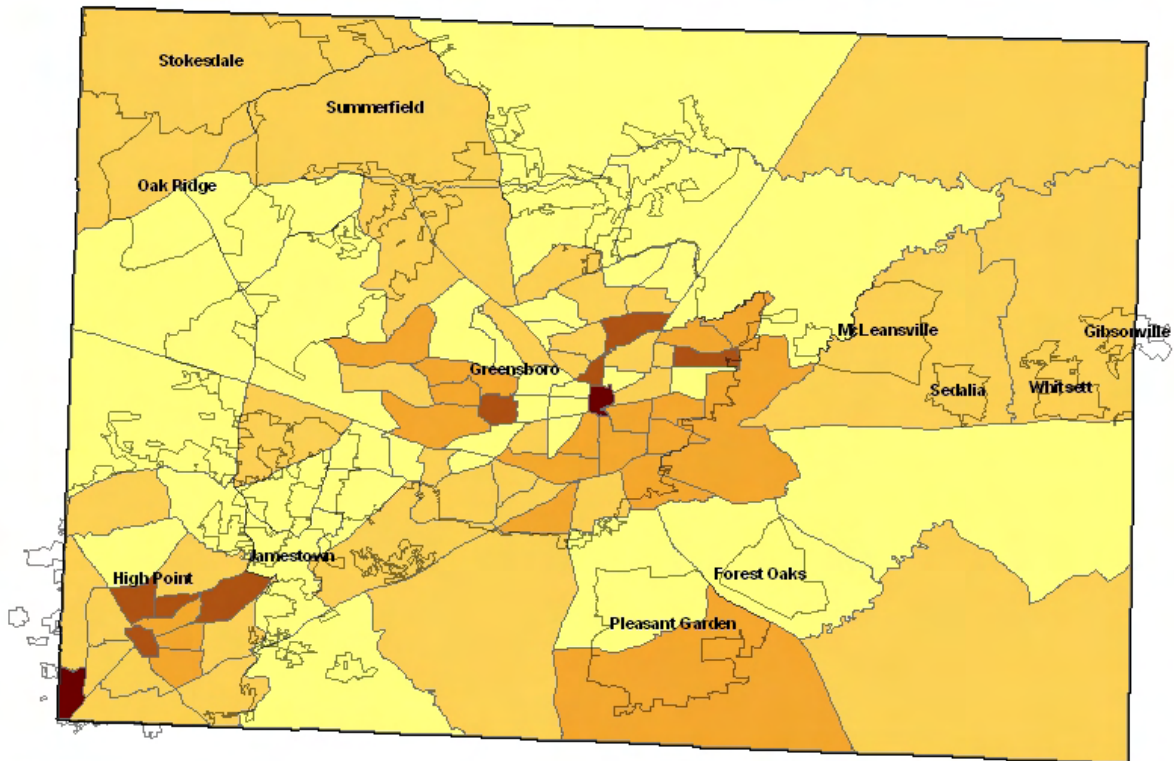




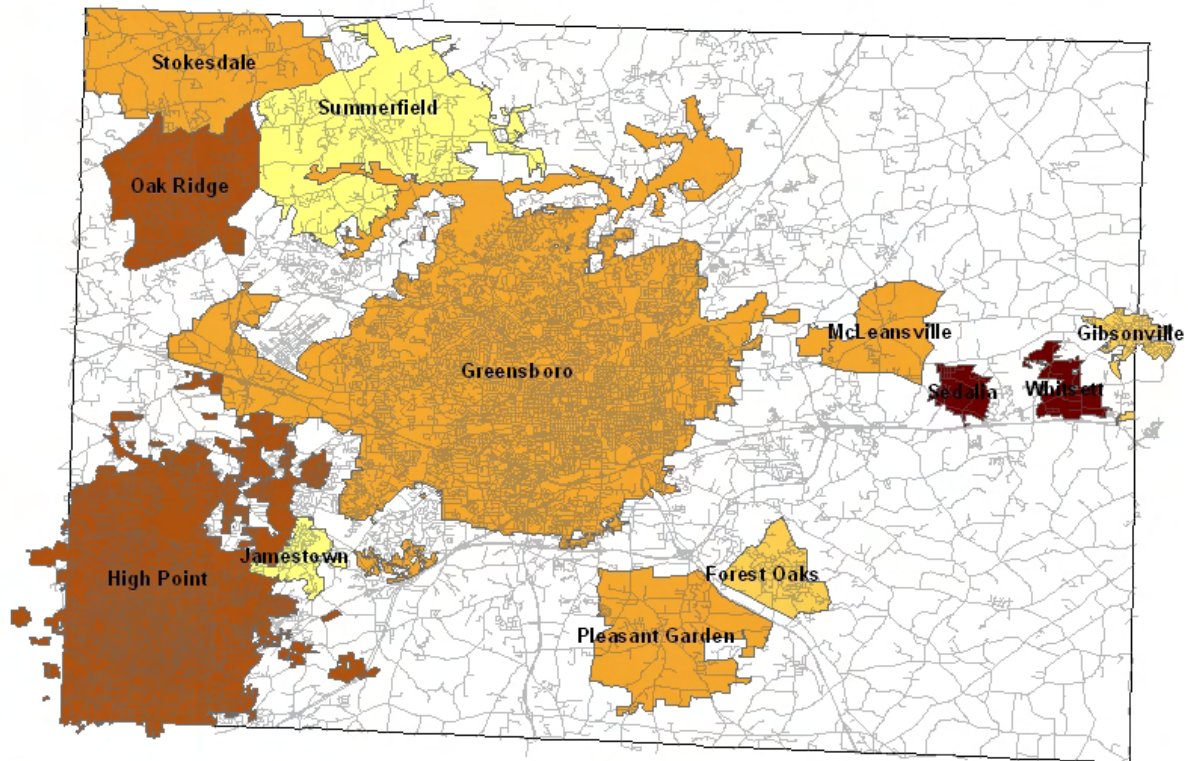
### Kidney Diseases Mortality Rates by Census Tract Guilford County, NC 2002-2006



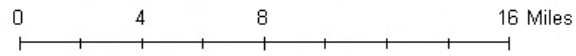
Source: US Census Bureau, 2000; NC State Center for Health Statistics, NC Mortality Files, 2002-2006



### Kidney Diseases Mortality Rates by Municipalities Guilford County, NC 2002-2006



Deaths per 100,000 Population	
6 - 8	(Light Yellow)
9 - 12	(Yellow-Orange)
13 - 17	(Orange)
18 - 20	(Dark Orange/Brown)
21 - 29	(Dark Red)



Source: US Census Bureau, 2000; NC State Center for Health Statistics, NC Mortality Files, 2002-2006

