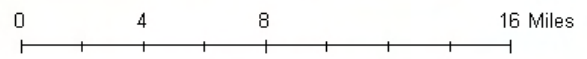
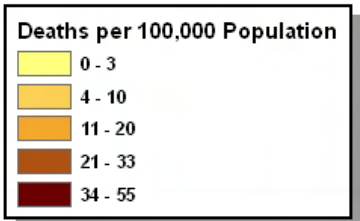
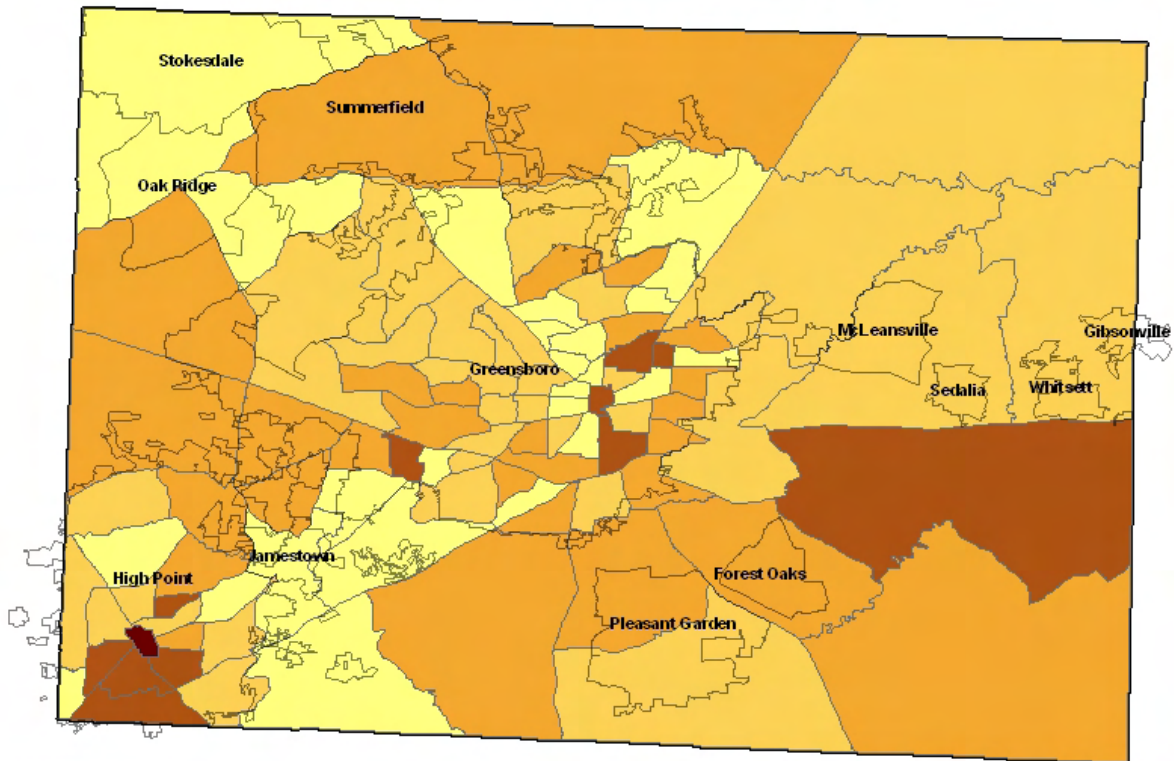




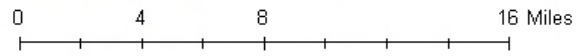
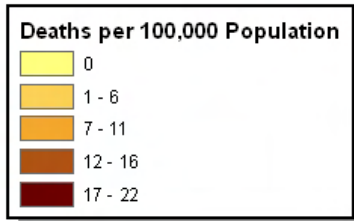
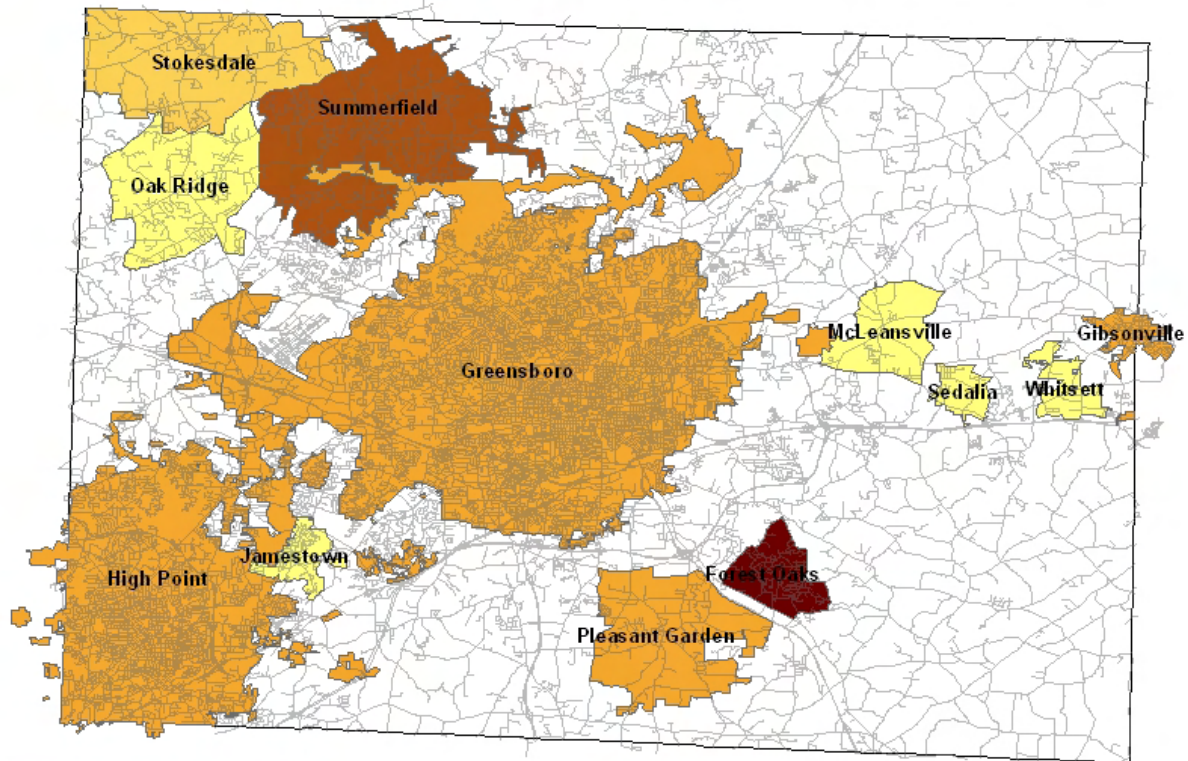
### Chronic Liver Disease and Cirrhosis Mortality Rates by Census Tract Guilford County, NC 2002-2006



Source: US Census Bureau, 2000; NC State Center for Health Statistics, NC Mortality Files, 2002-2006



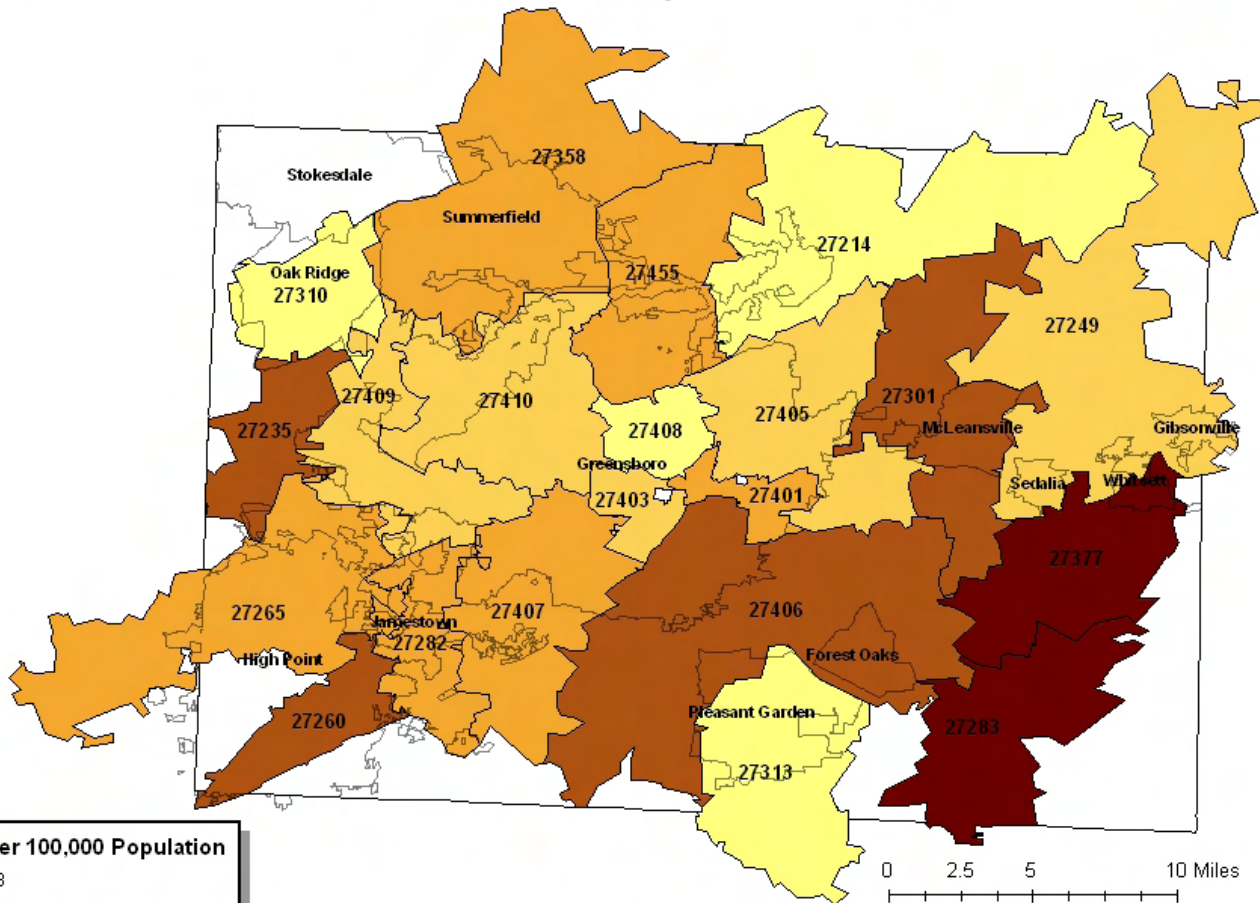
### Chronic Liver Disease and Cirrhosis Mortality Rates by Municipalities Guilford County, NC 2002-2006



Source: US Census Bureau, 2000; NC State Center for Health Statistics, NC Mortality Files, 2002-2006



### Chronic Liver Disease and Cirrhosis Mortality Rates by Major Zip Codes Guilford County, NC 2002-2006



Deaths per 100,000 Population	
0 - 3	Lightest Yellow
4 - 7	Light Orange
8 - 11	Orange
12 - 15	Dark Orange
16 - 24	Dark Red

Source: US Census Bureau, 2000; NC State Center for Health Statistics, NC Mortality Files, 2002-2006