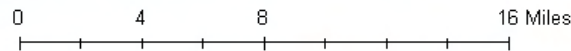
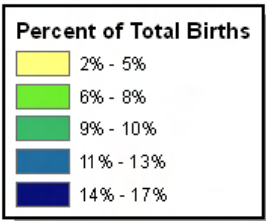
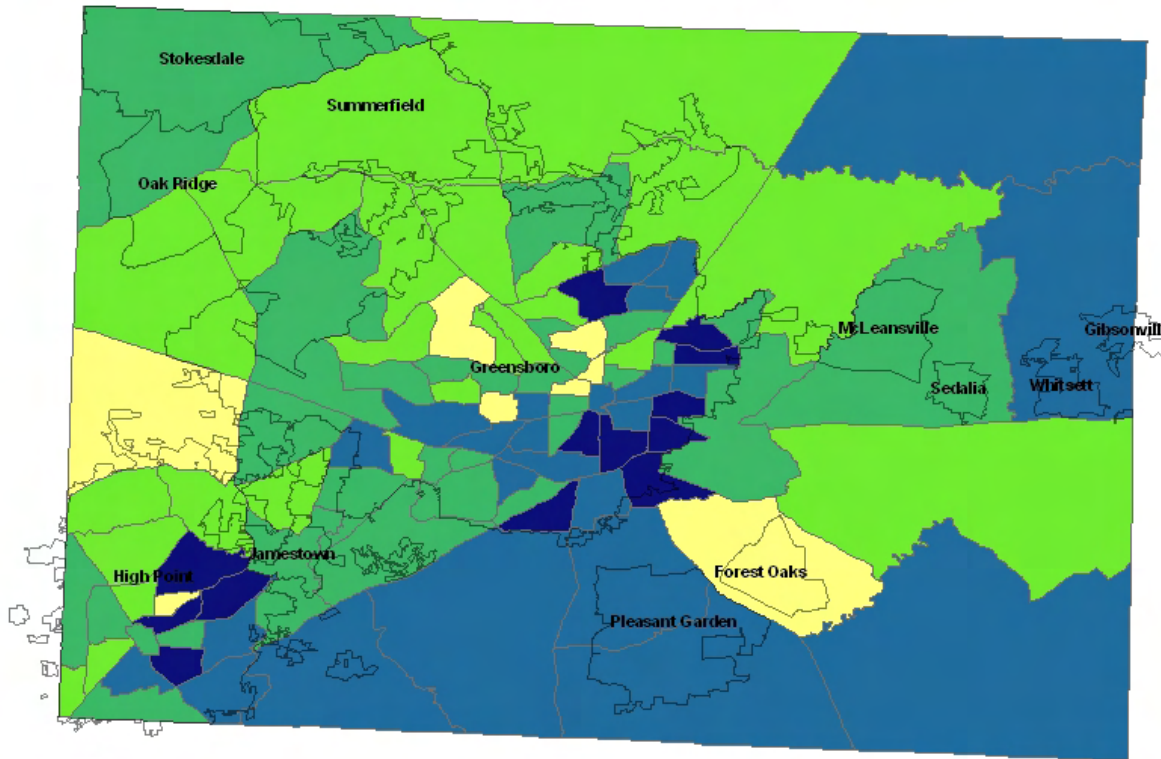




Percent Low Birthweight Births by Census Tract Guilford County, NC 2002-2006

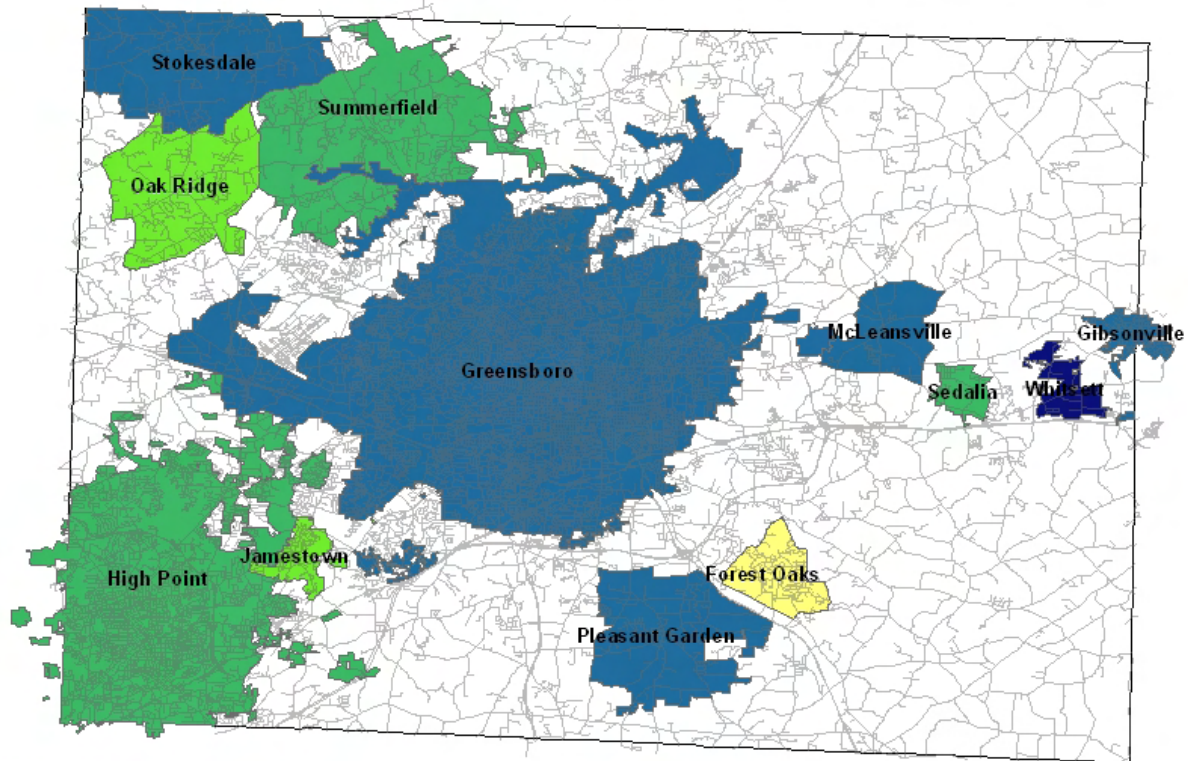


Note: Low birthweight refers to live births in which the baby weighs less than 2,500 grams (5 pounds, 8 ounces).

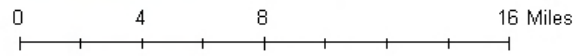
Source: NC State Center for Health Statistics, NC Birth Files, 2002-2006



Percent Low Birthweight Births by Municipalities Guilford County, NC 2002-2006



Percent of Total Births	
0%	Yellow
1% - 5%	Light Green
6% - 9%	Medium Green
10% - 12%	Blue
13% - 20%	Dark Blue



Note: Low birthweight refers to live births in which the baby weighs less than 2,500 grams (5 pounds, 8 ounces).

Source: NC State Center for Health Statistics, NC Birth Files, 2002-2006

