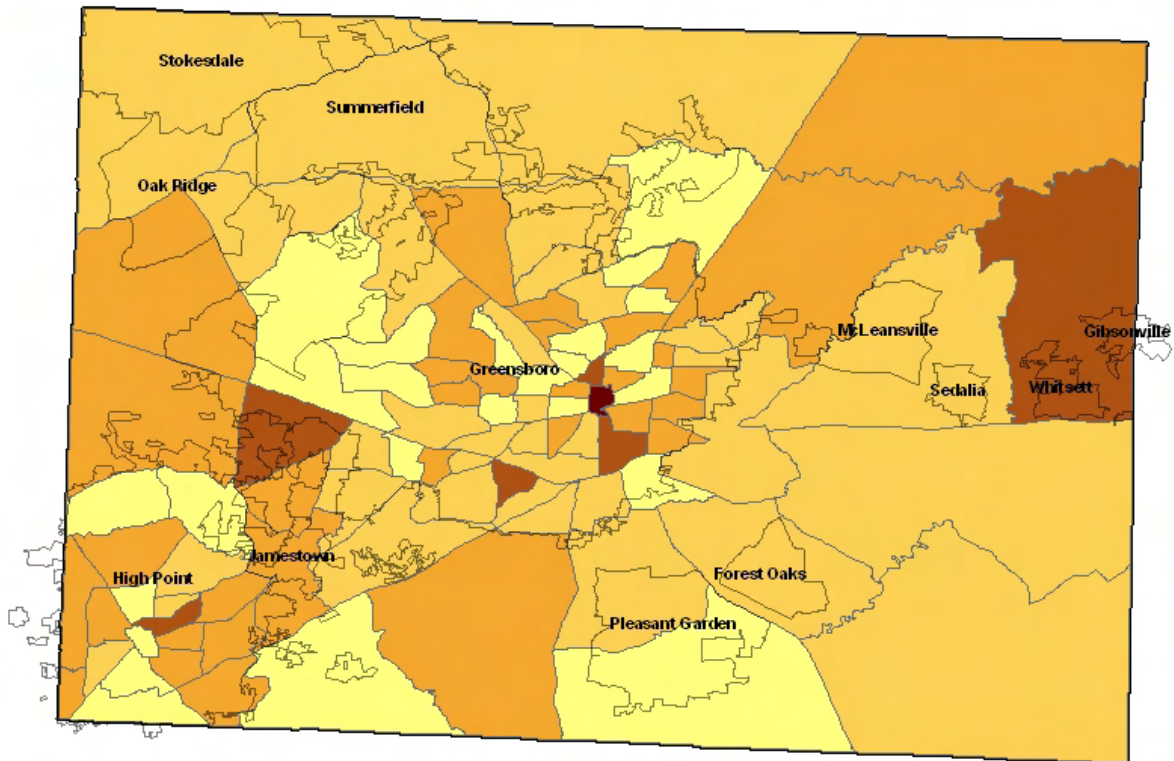
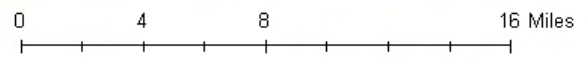




Poisonings Mortality Rates by Census Tract Guilford County, NC 2002-2006



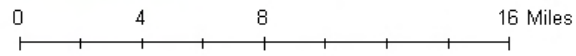
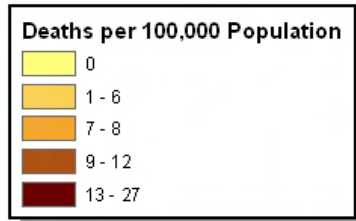
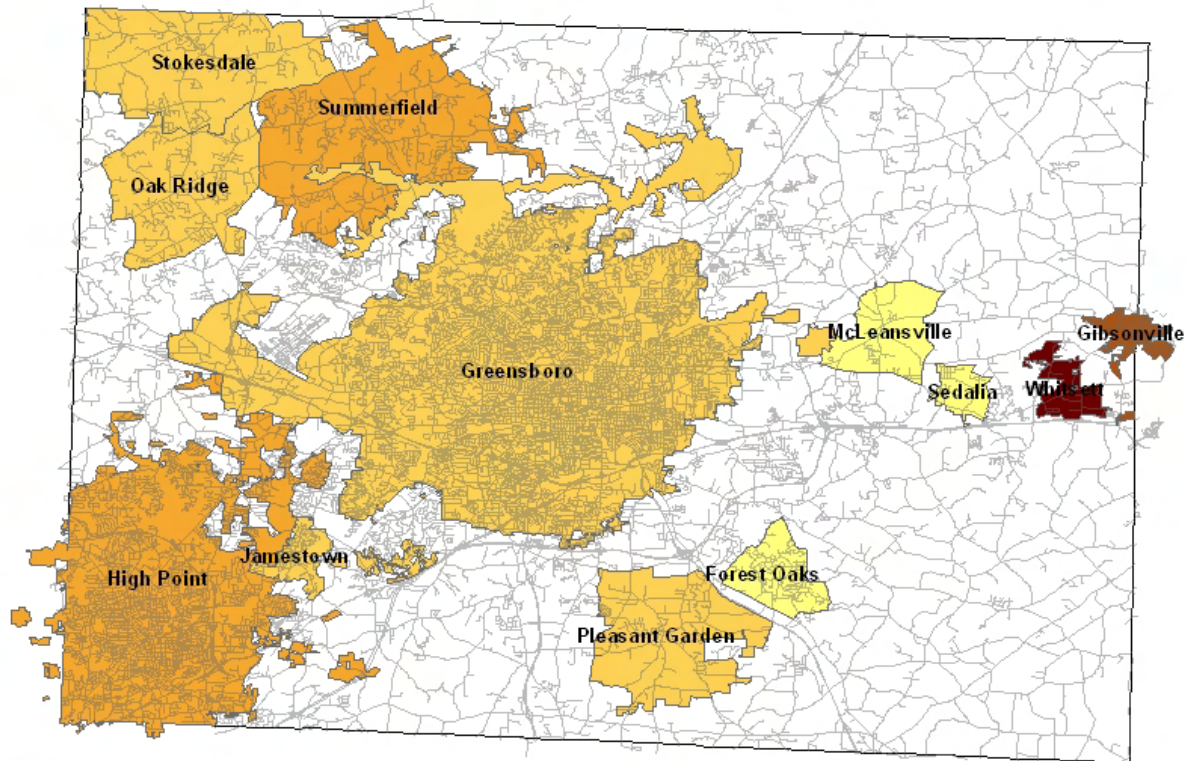
Deaths per 100,000 Population	
0 - 2	(Lightest yellow)
3 - 7	(Light orange)
8 - 14	(Medium orange)
15 - 24	(Dark orange)
25 - 33	(Darkest orange/brown)



Source: US Census Bureau, 2000; NC State Center for Health Statistics, NC Mortality Files, 2002-2006



Poisonings Mortality Rates by Municipalities Guilford County, NC 2002-2006



Source: US Census Bureau, 2000; NC State Center for Health Statistics, NC Mortality Files, 2002-2006

