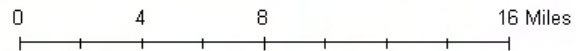
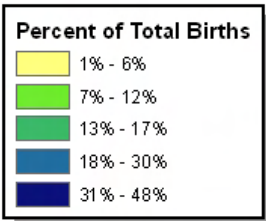
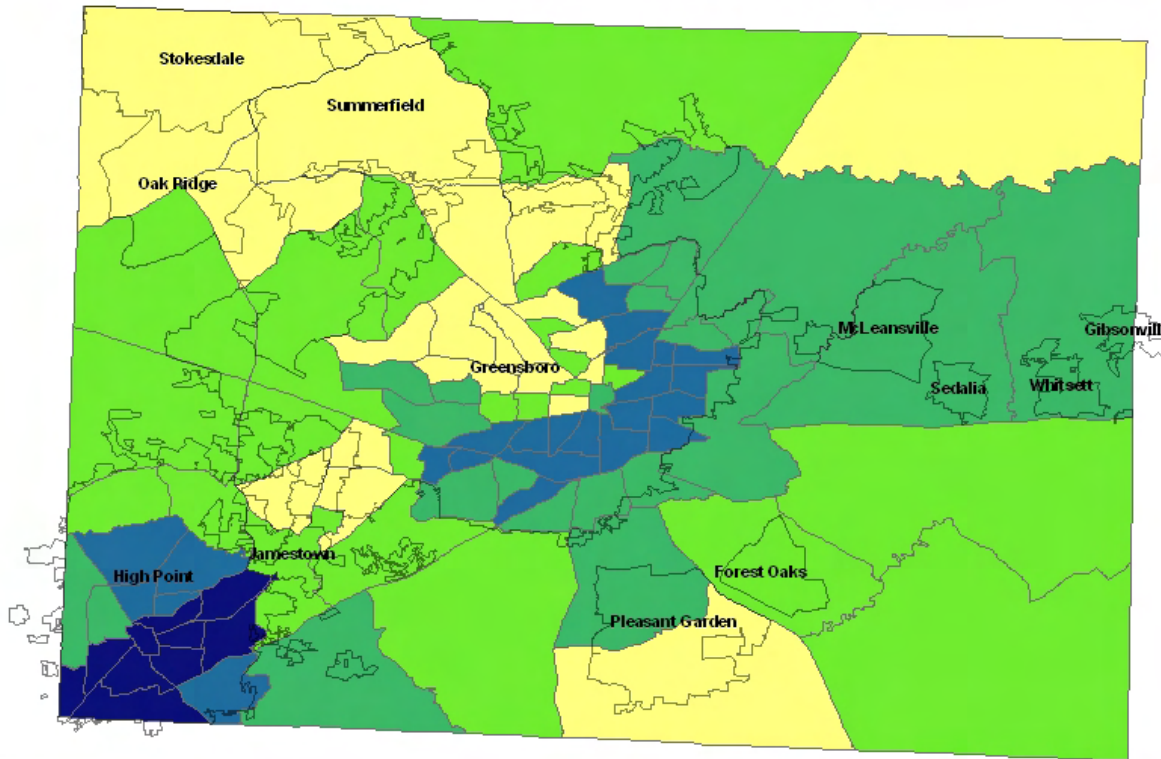




Percent Late or No Prenatal Care by Census Tract Guilford County, NC 2002-2006

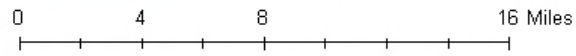
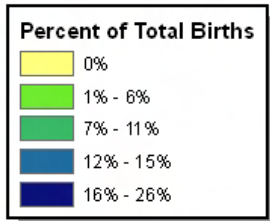
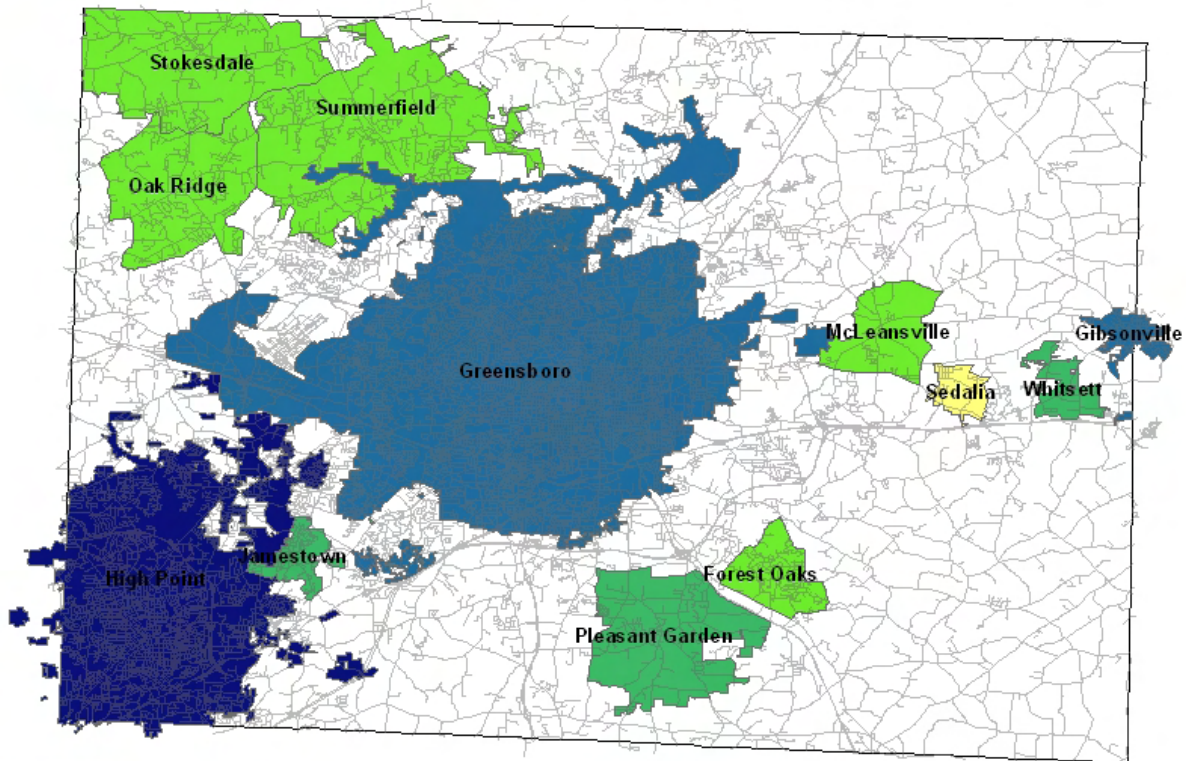


Note: Late prenatal care refers to prenatal care initiated after the first trimester (first three months) of pregnancy.

Source: NC State Center for Health Statistics, NC Birth Files, 2002-2006



Percent Late or No Prenatal Care by Municipalities Guilford County, NC 2002-2006

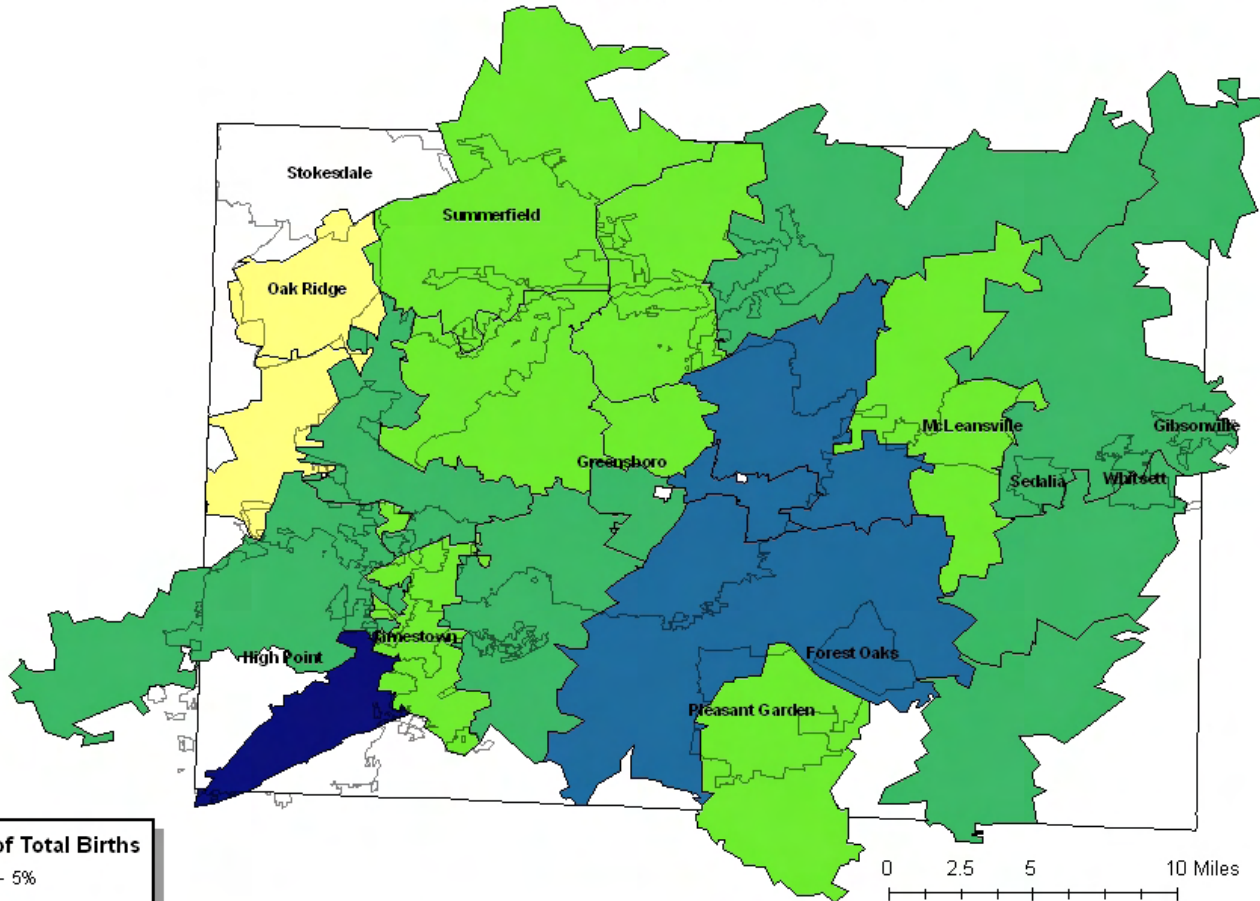


Note: Late prenatal care refers to prenatal care initiated after the first trimester (first three months) of pregnancy.

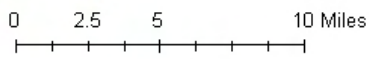
Source: NC State Center for Health Statistics, NC Birth Files, 2002-2006



Percent Late or No Prenatal Care by Major Zip Codes Guilford County, NC 2002-2006



Percent of Total Births	
4% - 5%	Light Yellow
6% - 7%	Light Green
8% - 14%	Medium Green
15% - 20%	Dark Blue
21% - 40%	Very Dark Blue



Note: Late prenatal care refers to prenatal care initiated after the first trimester (first three months) of pregnancy.

Source: NC State Center for Health Statistics, NC Birth Files, 2002-2006