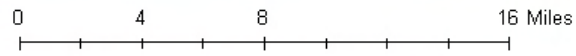
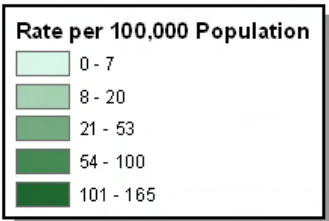
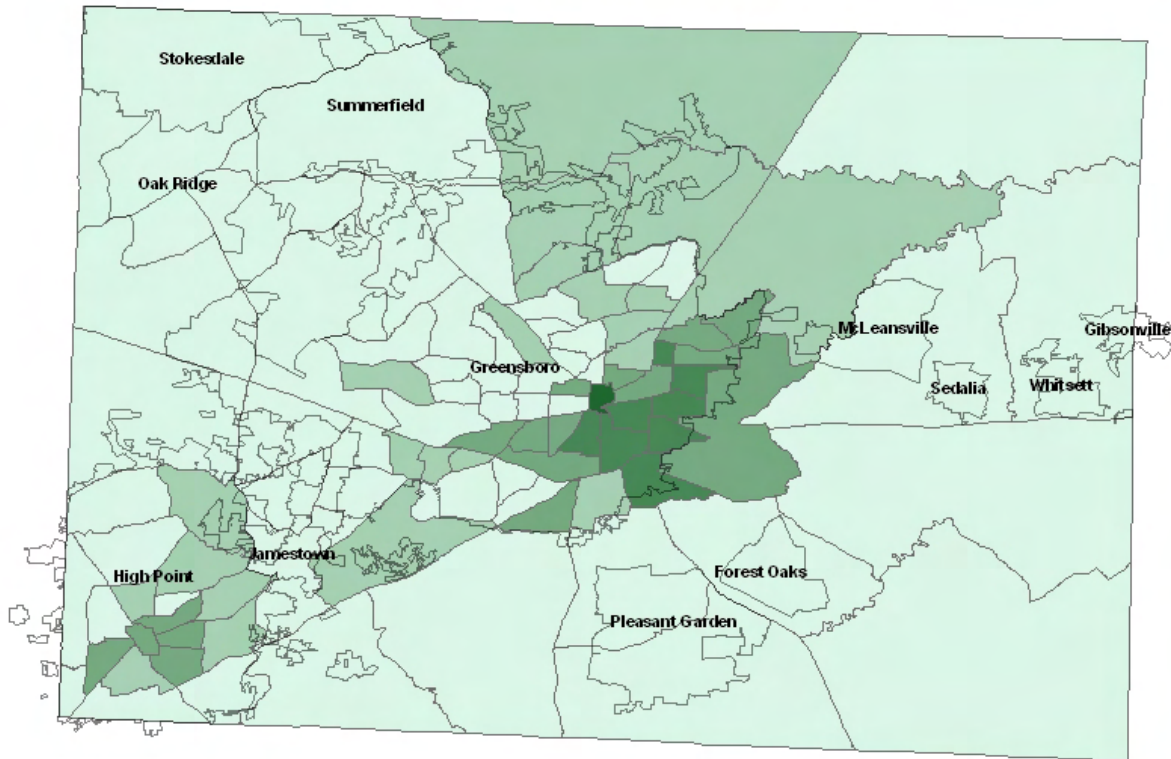




Syphilis Rates* by Census Tract Guilford County, NC 2003-2007

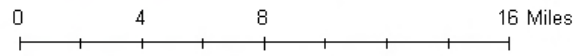
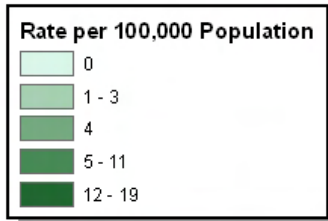
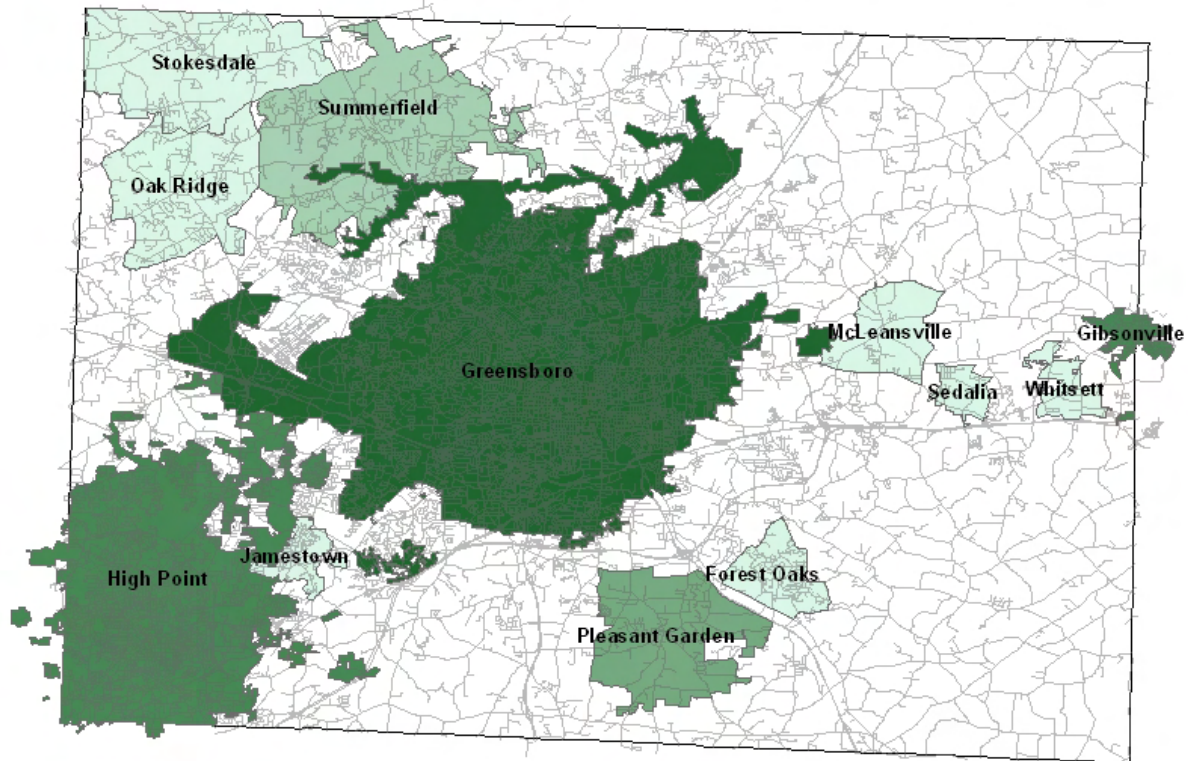


* Cases include Primary, Secondary, and Early Latent Diagnoses

Source: US Census Bureau, 2000; NC State Center for Health Statistics, STD File, 2007



Syphilis Rates* by Municipalities Guilford County, NC 2003-2007

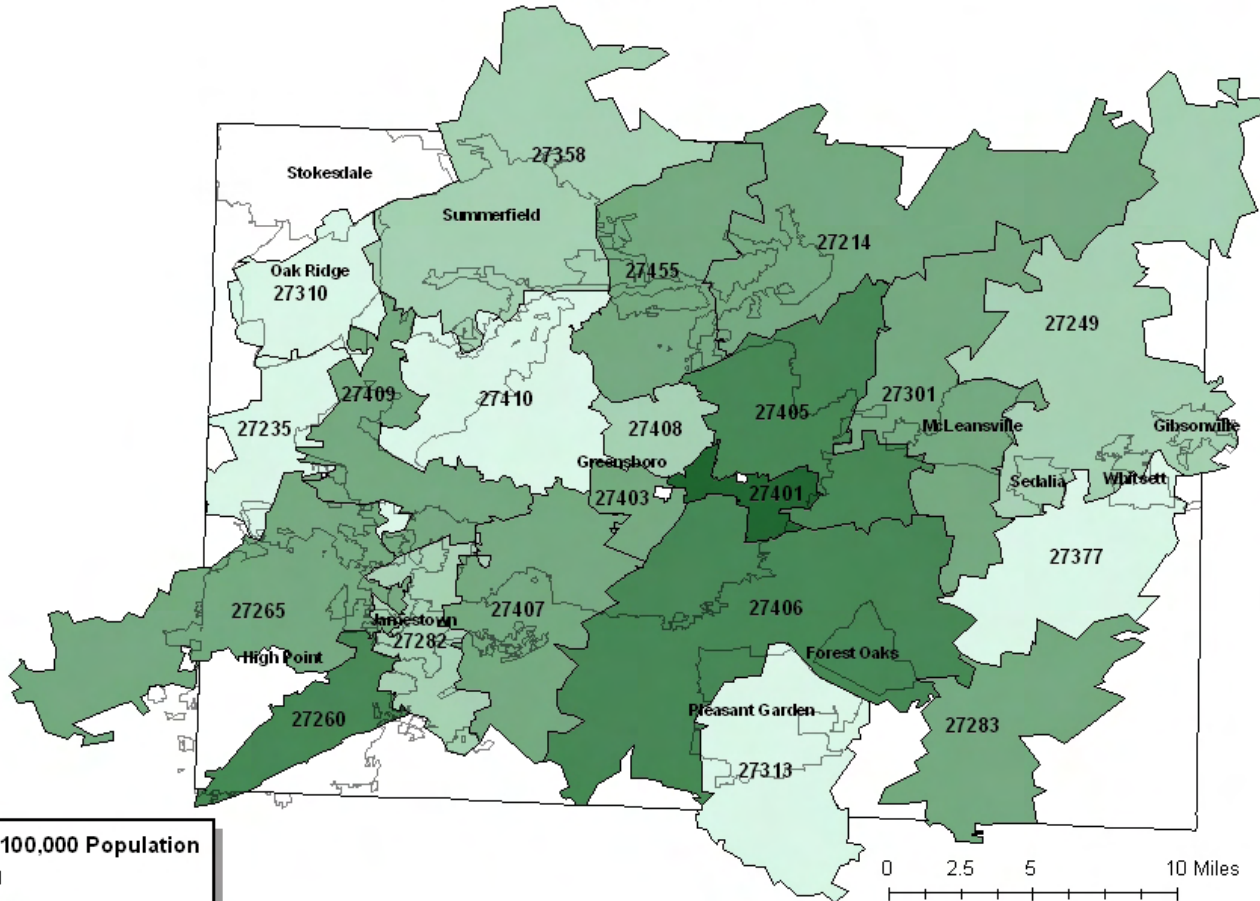


* Cases include Primary, Secondary, and Early Latent Diagnoses

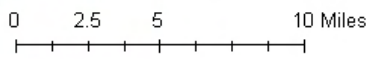
Source: US Census Bureau, 2000; NC State Center for Health Statistics, STD File, 2007



Syphilis Rates* by Major Zip Codes Guilford County, NC 2003-2007



Rate per 100,000 Population	
0 - 1	Lightest Green
2 - 3	Light Green
4 - 15	Medium Green
16 - 32	Dark Green
33 - 56	Darkest Green



* Cases include Primary, Secondary, and Early Latent Diagnoses

Source: US Census Bureau, 2000; NC State Center for Health Statistics, STD File, 2007